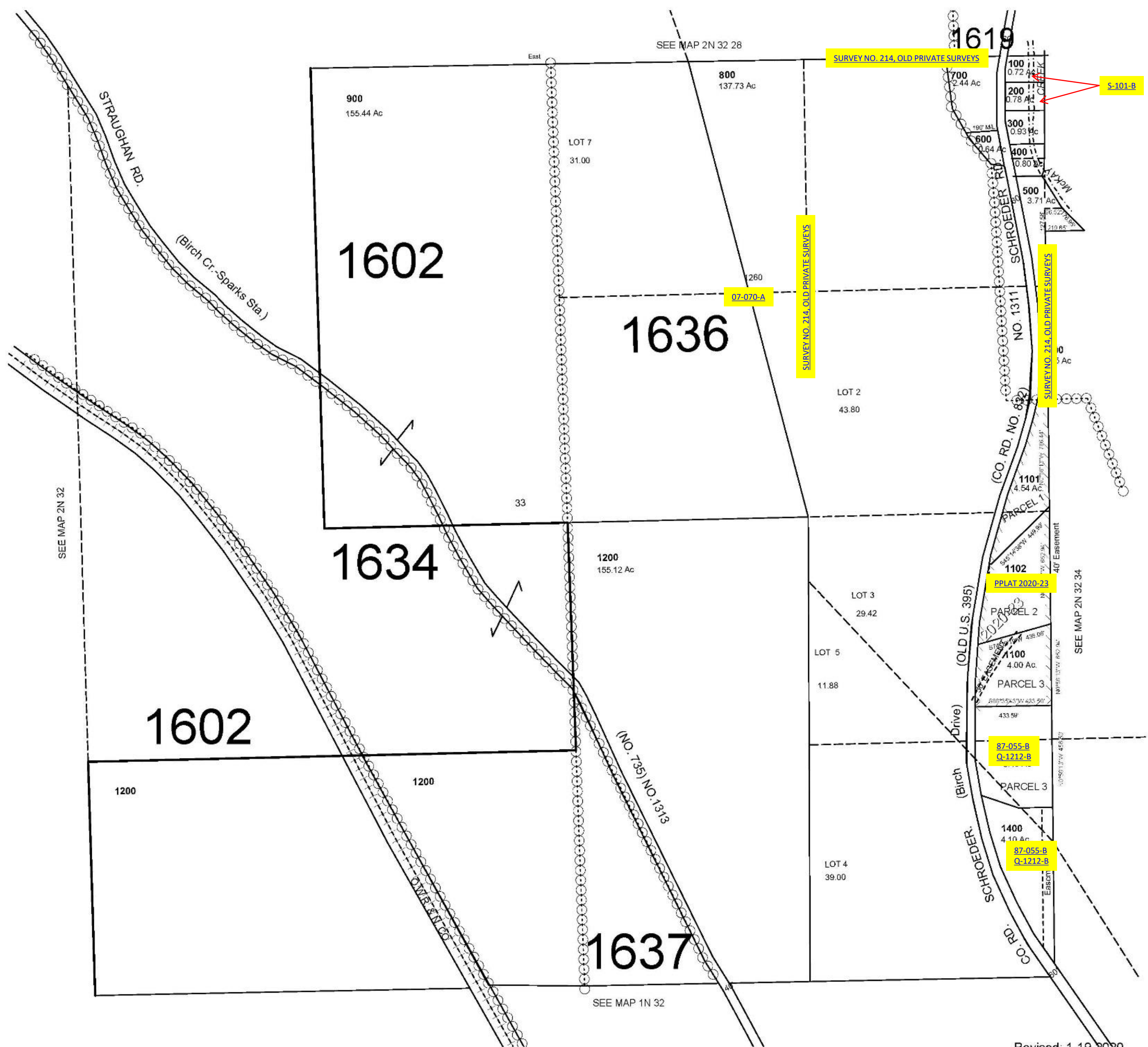


ALSO SEE SURVEYS 97-256-B, 07-240-B, 10-093-C, 94-109-C; CORNER RECORDS; G.L.O. SURVEYS; SURVEY NO. 107, OLD PRIVATE SURVEYS

This map was prepared for Assessment and Taxation purposes only and has NOT been prepared for legal, engineering or surveying purposes.

SEC 33 T2N R32E WM  
UMATILLA COUNTY  
SCALE 1"=400'

2N 32 33



Revised: 1-19-2020

2N 32 33