

ALSO SEE SURVEY NO. 66, OLD PRIVATE SURVEYS

This map was prepared for assessment purposes

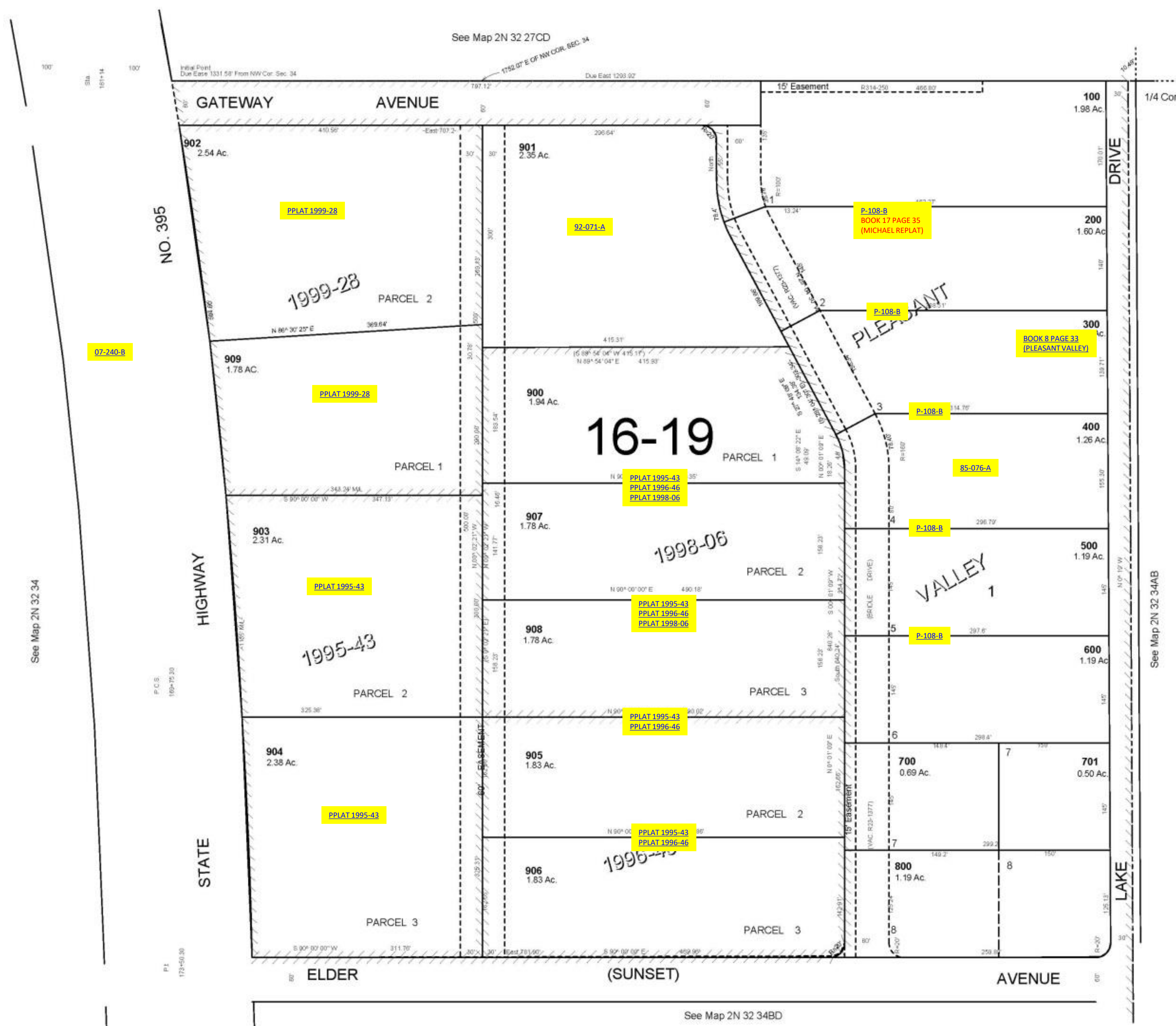
NE1/4 NW1/4 SEC 34 T2N R32E WM UMATILLA COUNTY

11/21/05

2N 32 34BA

1"=100'

AERIAL PHOTO NO. 4P 49 & 50



2N 32 34BA