

ALSO SEE SURVEYS 10-093-C, 94-109-C, Q-0056-AX, R-0079-A; CORNER RECORDS; G.L.O. SURVEYS

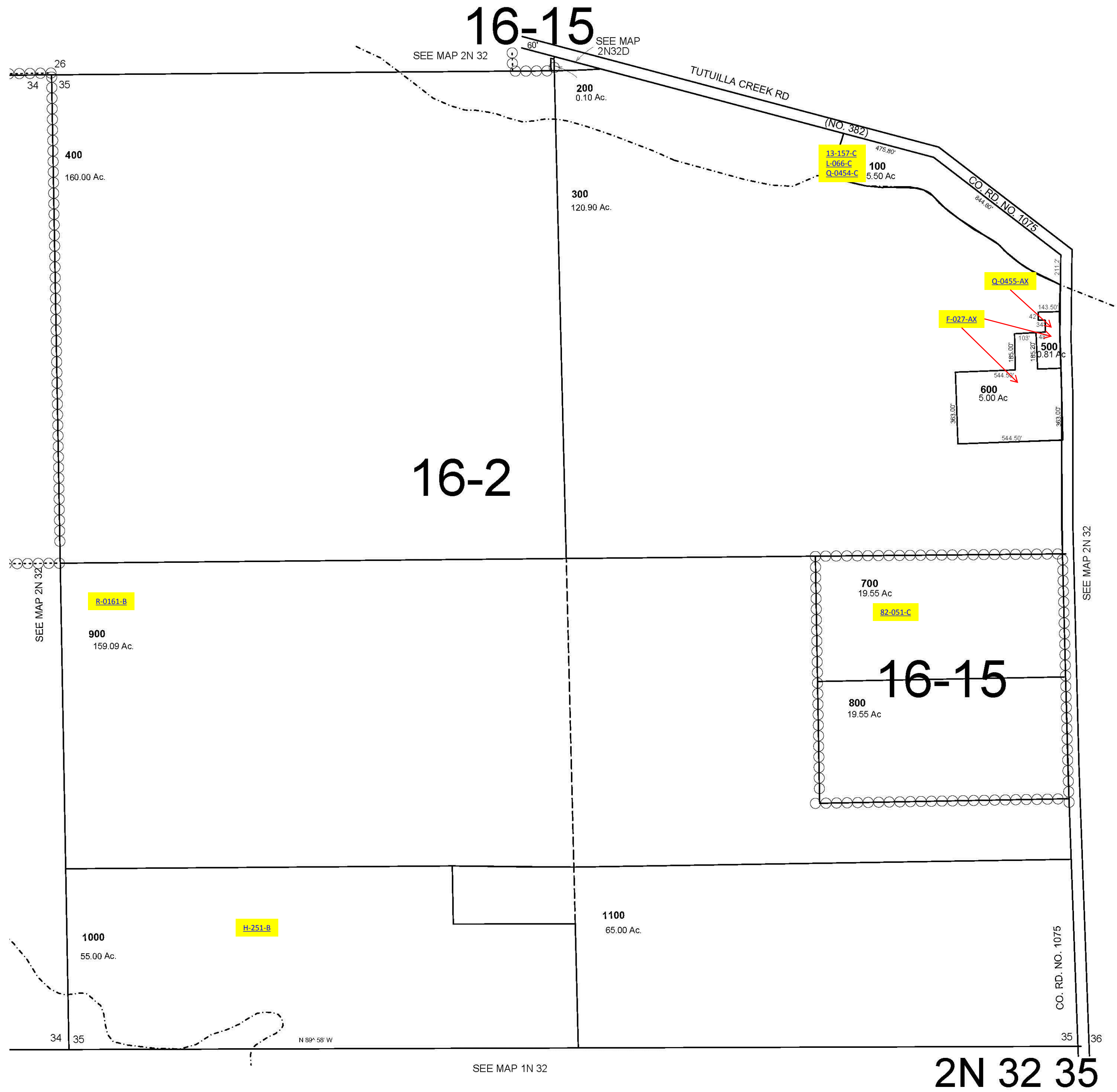
This map was prepared for Assessment & Taxation purposes only and was NOT prepared nor is it suitable for legal, engineering or surveying purposes.

SEC 35 T2N R32E WM UMATILLA COUNTY

3/9/05

2N 32 35

1"=400'



2N 32 35