

ALSO SEE SURVEYS 05-154-C, 06-145-AX, 07-285-C, Q-0466-AX, S-138-AX, 12-027-B, 90-050-C, 96-055-G, H-144-C; CORNER RECORDS; G.L.O. SURVEYS; REDFIELD SURVEYS

This map was prepared for Assessment & Taxation purposes only and was NOT prepared nor is it suitable for legal, engineering or surveying purposes.

SEC 07 T2N R33E WM UMATILLA COUNTY

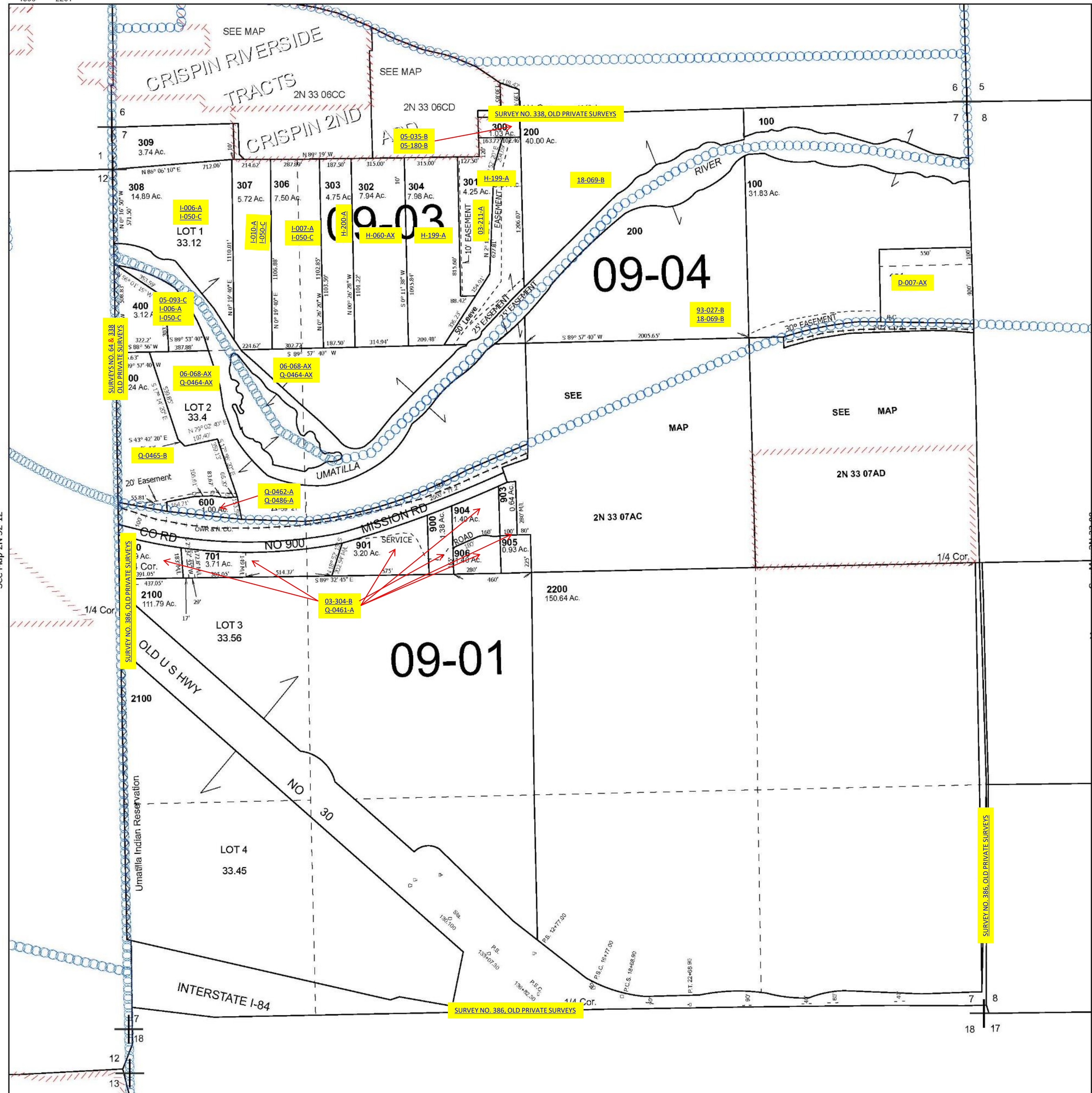
2N 33 07

SCALE 1" = 400'

See Map 2N 33 06

Cancelled Tax Lots

702	1400
800	1500
902	1600
907	1700
908	1800
1000	1900
1100	2000-2006
1102	2101
1200	2102
1300	2201



Revised 9/17/2024

See Map 2N 33

2N 33 07