

ALSO SEE SURVEYS 12-069-C, R-0076-A, 00-259-B, 03-023-C, L-022-C, 89-129-C, 89-130-C, L-020-C, L-021-C; CORNER RECORDS; G.L.O. SURVEYS; REDFIELD SURVEYS

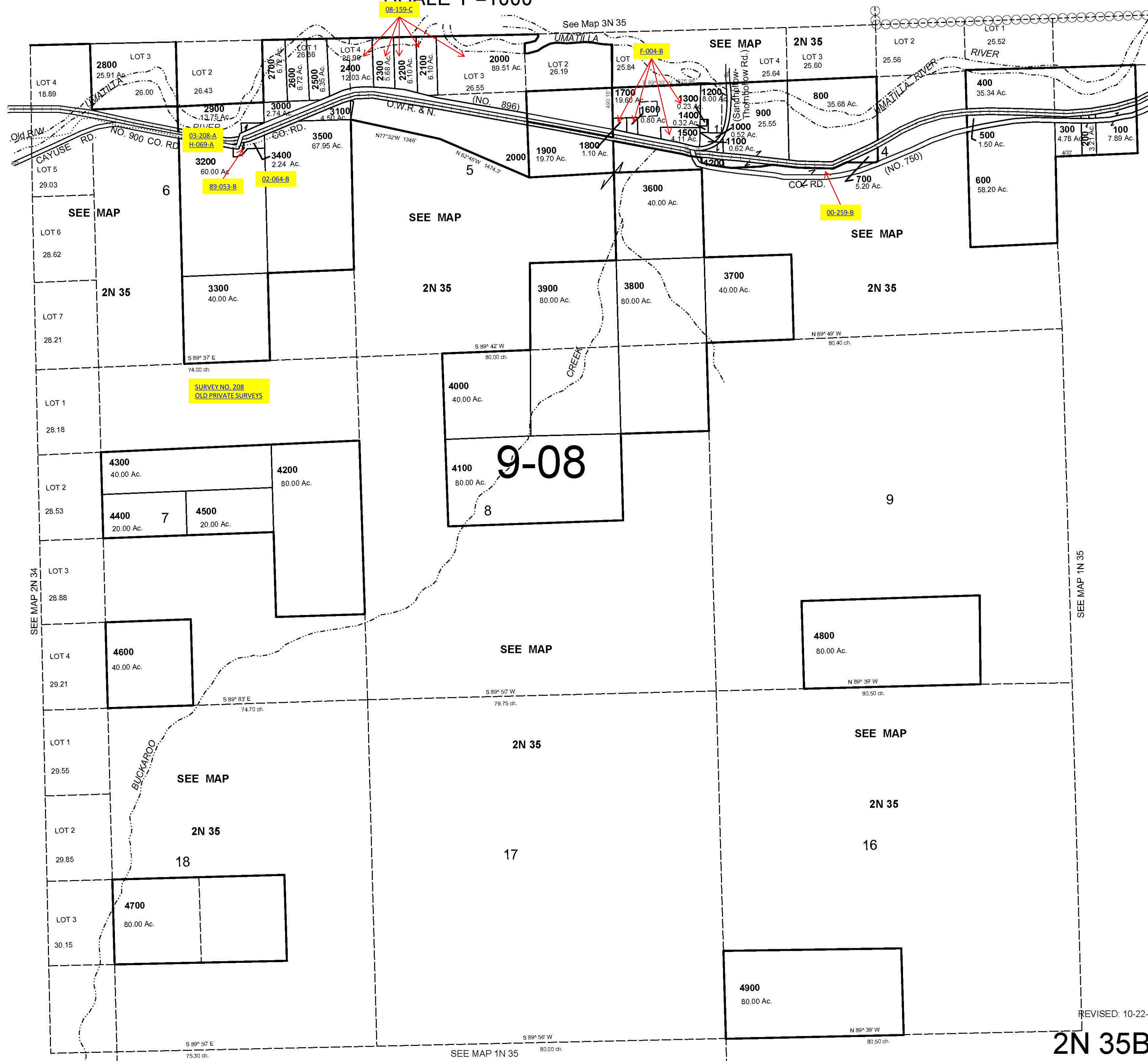
This map was prepared for Assessment & Taxation purposes only and was NOT prepared nor is it suitable for legal, engineering or surveying purposes.

# NW1/4 T2N R35E WM UMATILLA COUNTY

## 2N 35B

AERIAL PHOTO NO. NZ 4P 87-89

SCALE 1"=1000'



REVISED: 10-22-09

## 2N 35B