

ALSO SEE SURVEYS 00-110-B, 02-273-B, 12-025-B, 83-179-B, CORNER RECORDS, G.L.O. SURVEYS, REDFIELD SURVEYS

This map was prepared for Assessment & Taxation purposes only and was NOT prepared nor is it suitable for legal, engineering or surveying purposes.

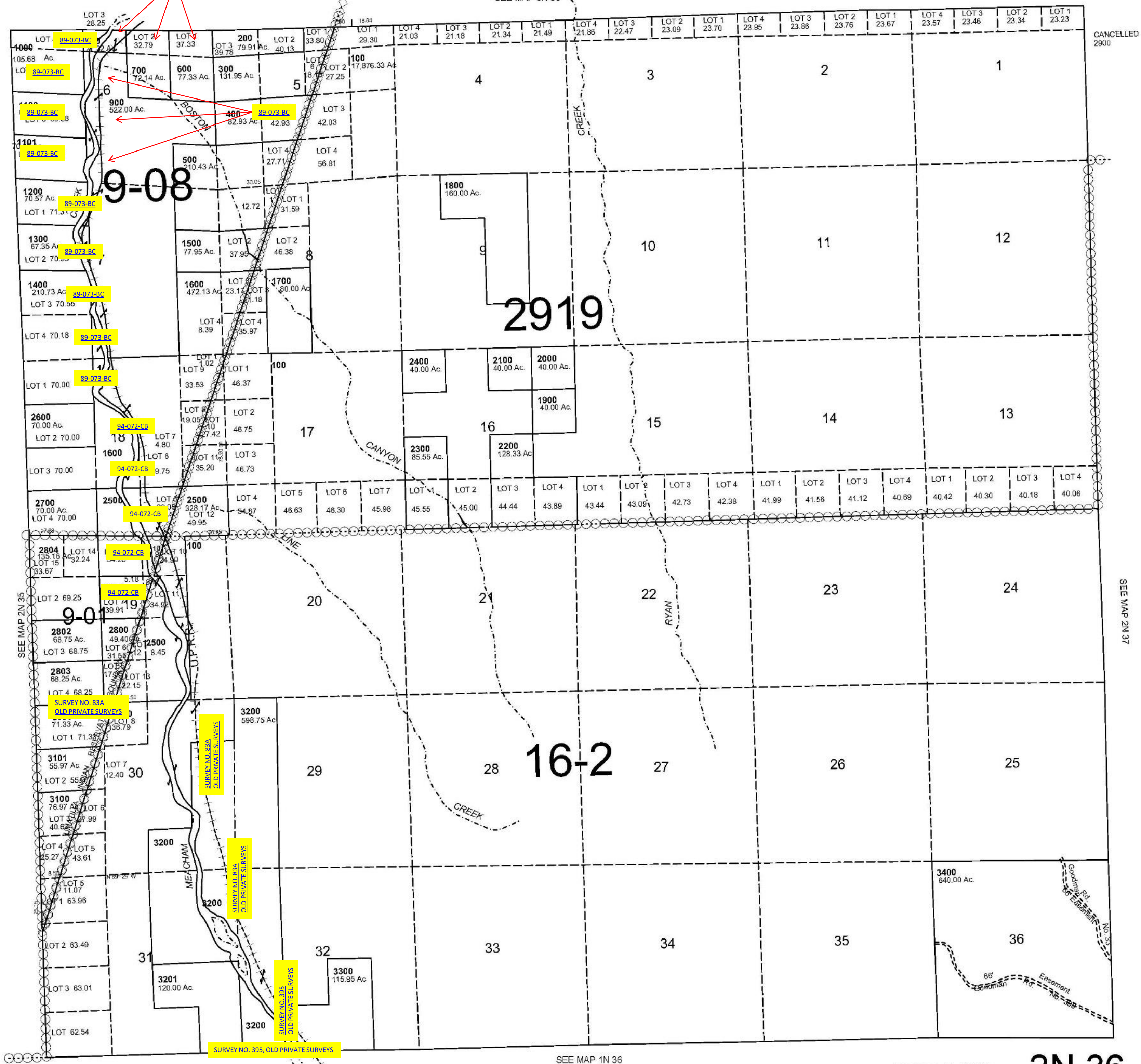
T2N R36E WM UMATILLA COUNTY

1" = 2000

2N 36

AERIAL PHOTO NO: NZ-4P-85

SEE MAP 3N 36



CANCELLED 2900

SEE MAP 2N 37

SEE MAP 1N 36

Revised: 11-21-16

2N 36