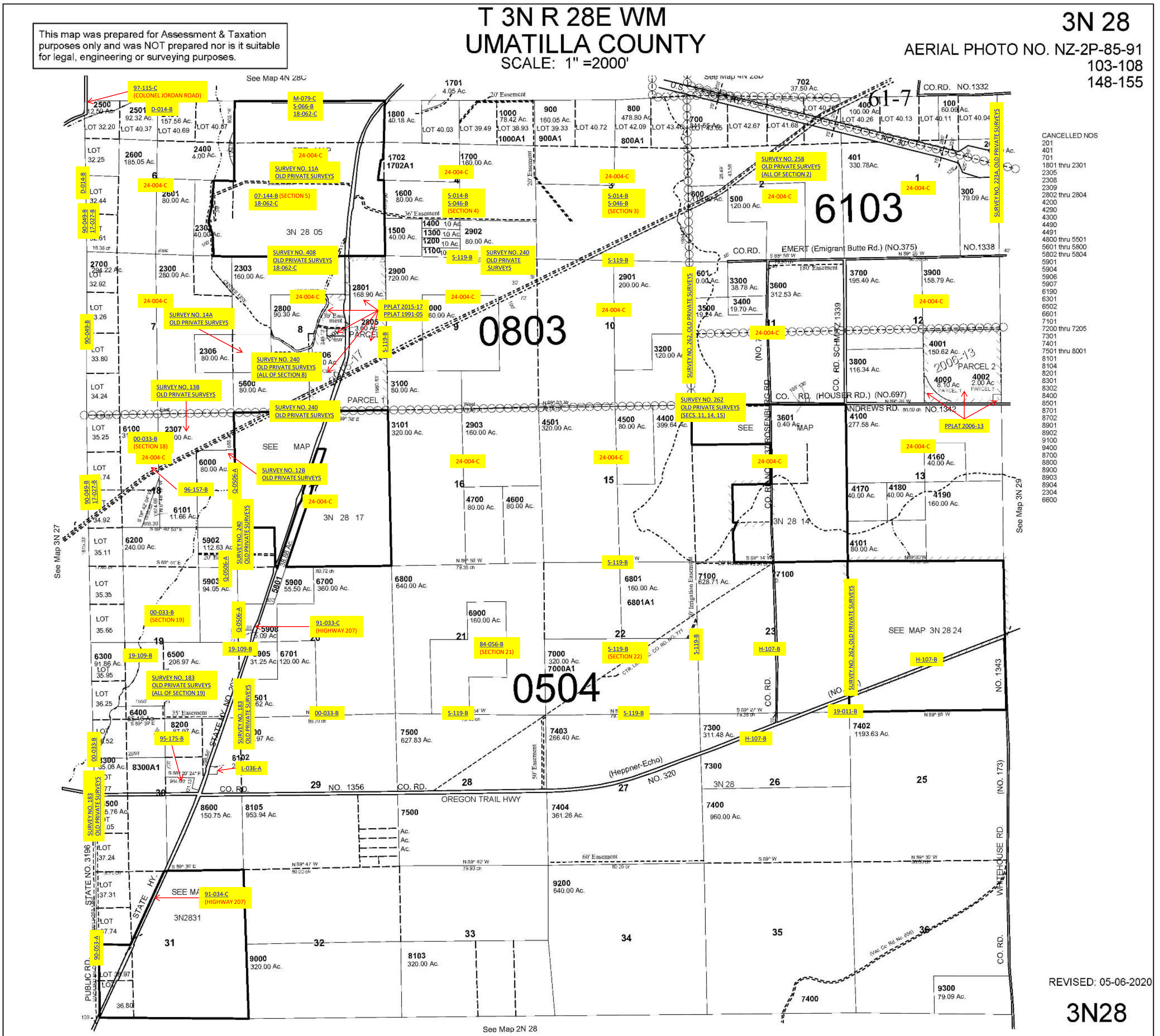


ALSO SEE SURVEYS 06-551-B, 13-015-C, 13-557-C, Q-0042-C, Q-0043-B, Q-0044-B, Q-0505-A, S-156-C, 11-038-C, CORNER RECORDS; G.L.O. SURVEYS; SURVEYS NO. 198, 357, & 253, OLD PRIVATE SURVEYS

This map was prepared for Assessment & Taxation purposes only and was NOT prepared nor is it suitable for legal, engineering or surveying purposes.

# T 3N R 28E WM UMATILLA COUNTY SCALE: 1" = 2000'

**3N 28**  
AERIAL PHOTO NO. NZ-2P-85-91  
103-108  
148-155



REVISED: 05-06-2020

**3N28**