

ALSO SEE SURVEYS 11-038-C, 5-158-C; CORNER RECORDS; G.L.O. SURVEYS

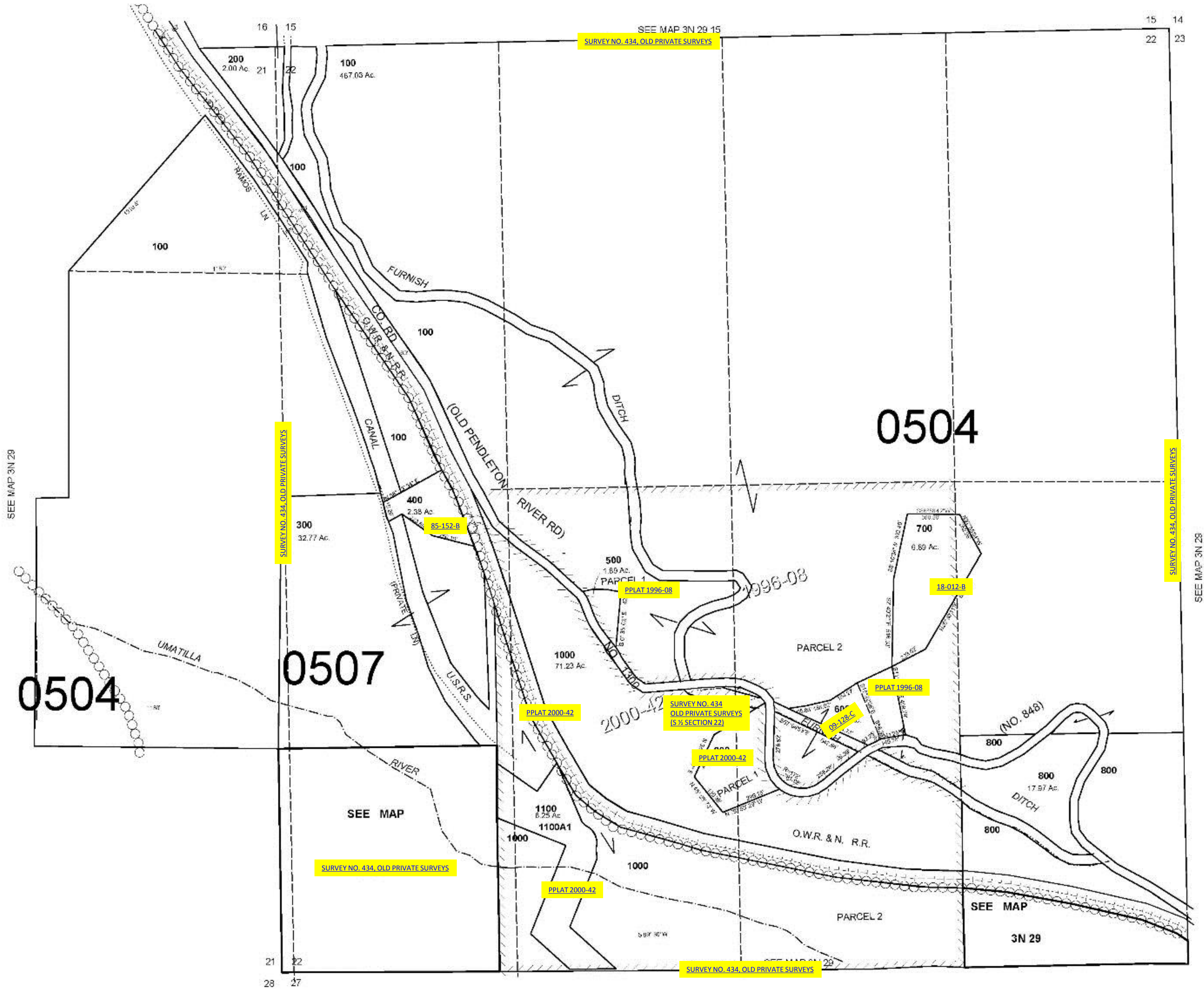
This map was prepared for Assessment & Taxation purposes only and was NOT prepared nor is it suitable for legal, engineering or surveying purposes.

# SEC 22 T3N R29E WM UMATILLA COUNTY

## 3N 29 22

AERIAL PHOTO NO. NZ 2P 80-86, 109-114 & 144-148

SCALE 1"=400'



Revised: 04-26-18

## 3N 29 22