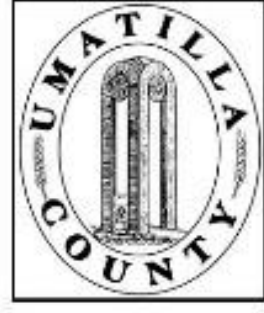


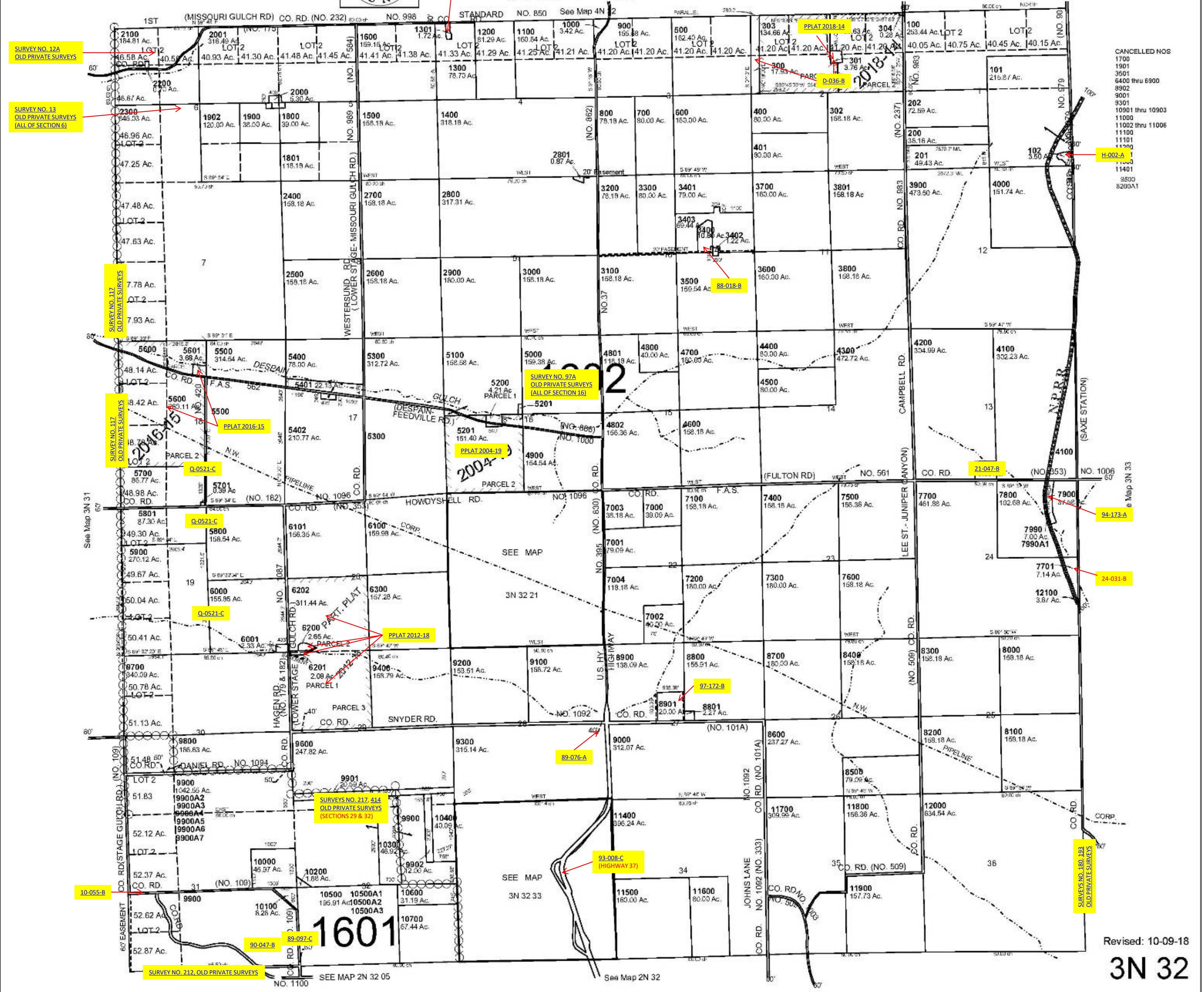
This map was prepared for Assessment & Taxation purposes only and was NOT prepared nor is it suitable for legal, engineering and surveying purposes.



T3N R32E WM UMATILLA COUNTY SCALE: 1"=2000'

3N 32

AERIAL PHOTO NO. NZ-5P 179-182 & 4P 165-168
2P 130-131 & 4P 114-116



CANCELLED NOS
1700
1901
3601
6406 thru 6900
8902
9001
9301
10901 thru 10903
11000
11062 thru 11006
11100
11101
11200
11400
11401
9500
8200A1

Revised: 10-09-18
3N 32