

ALSO SEE SURVEY 12-094-C, Q-0522-A; CORNER RECORDS; G.L.O. SURVEYS

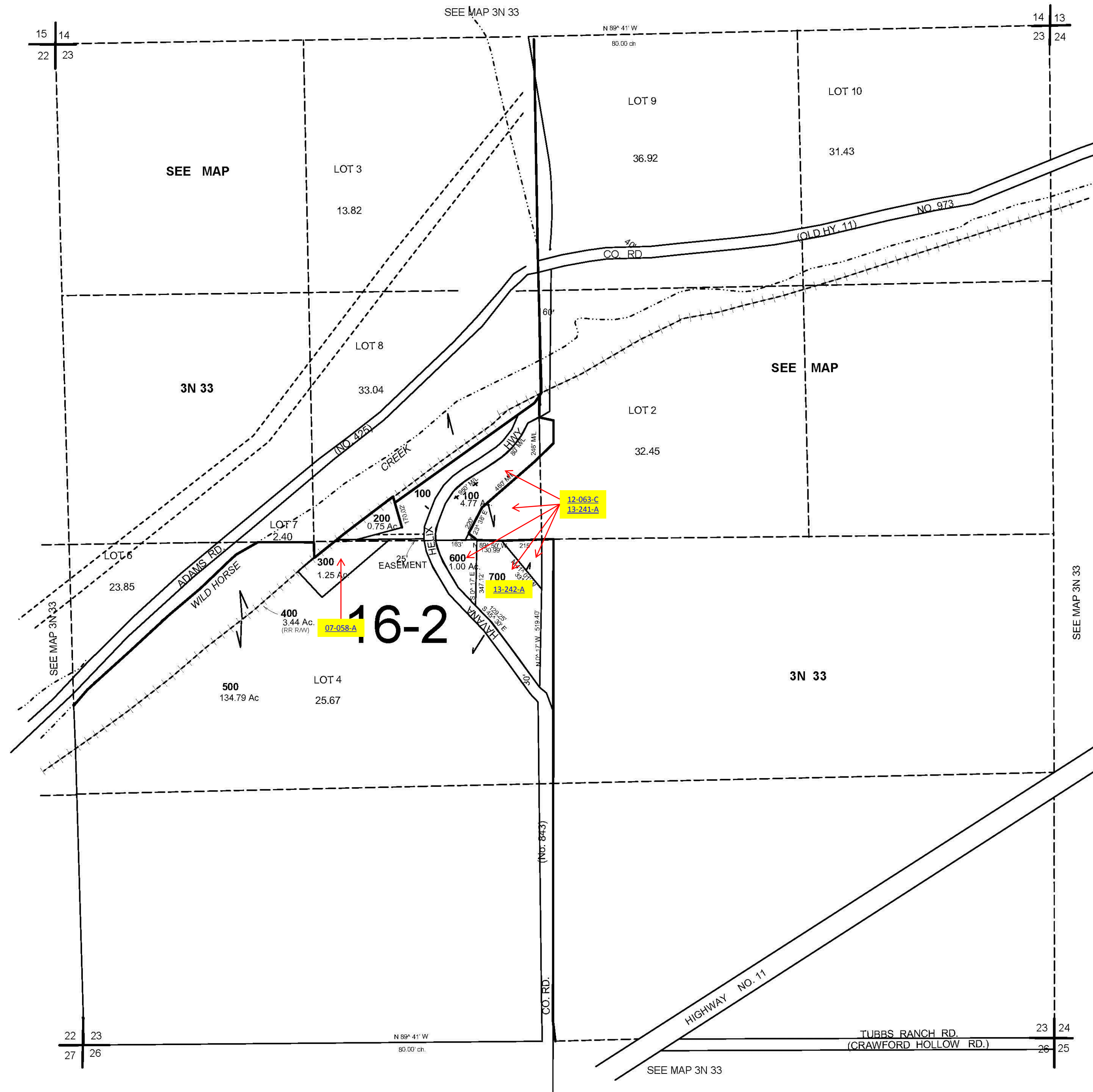
This map was prepared for Assessment & Taxation purposes only and was not prepared, nor is it suitable for legal, engineering or surveying purposes.

SEC 23 T3N R33E WM UMATILLA COUNTY

1"=400'

3N 33 23

AERIAL PHOTO NO. NZ 5P 173-178, 4P 159-167 & 114-121



Revised: 09-15-14

3N 33 23