

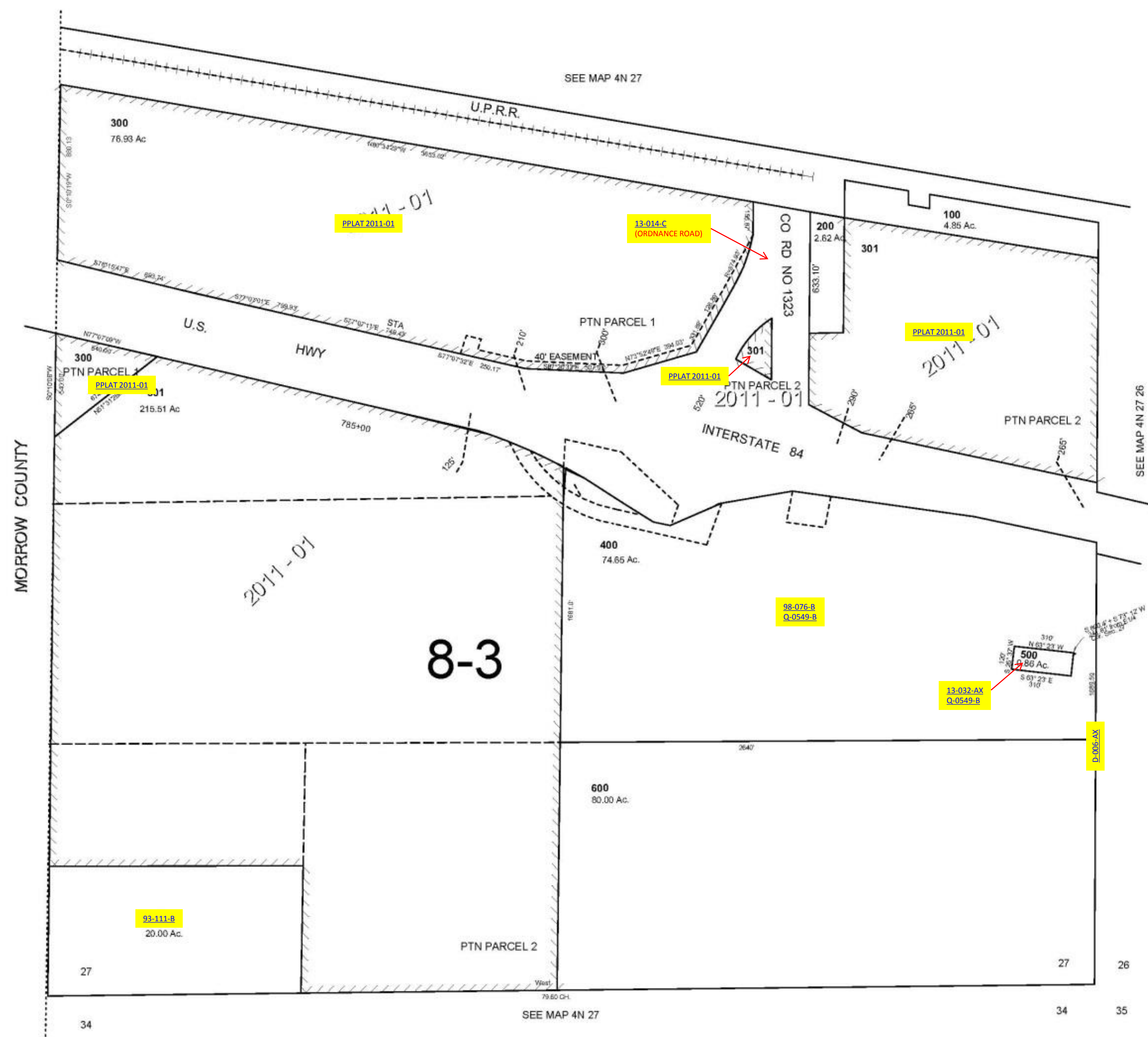
This map was prepared for Assessment & Taxation purposes only and was NOT prepared nor is it suitable for legal, engineering, or surveying purposes.



# SEC 27 T4N R27E WM UMATILLA COUNTY

SCALE: 1" = 400'

4N 27 27  
AERIAL PHOTO NO. NZ-1P 116-118  
2P 27-29 & 36-38



Revised: 1/20/11

## 4N 27 27