

ALSO SEE SURVEY 05-013-G

This map was prepared for Assessment & Taxation purposes only and was NOT prepared nor is it suitable for legal, engineering or surveying purposes.

Cancelled Tax Lots

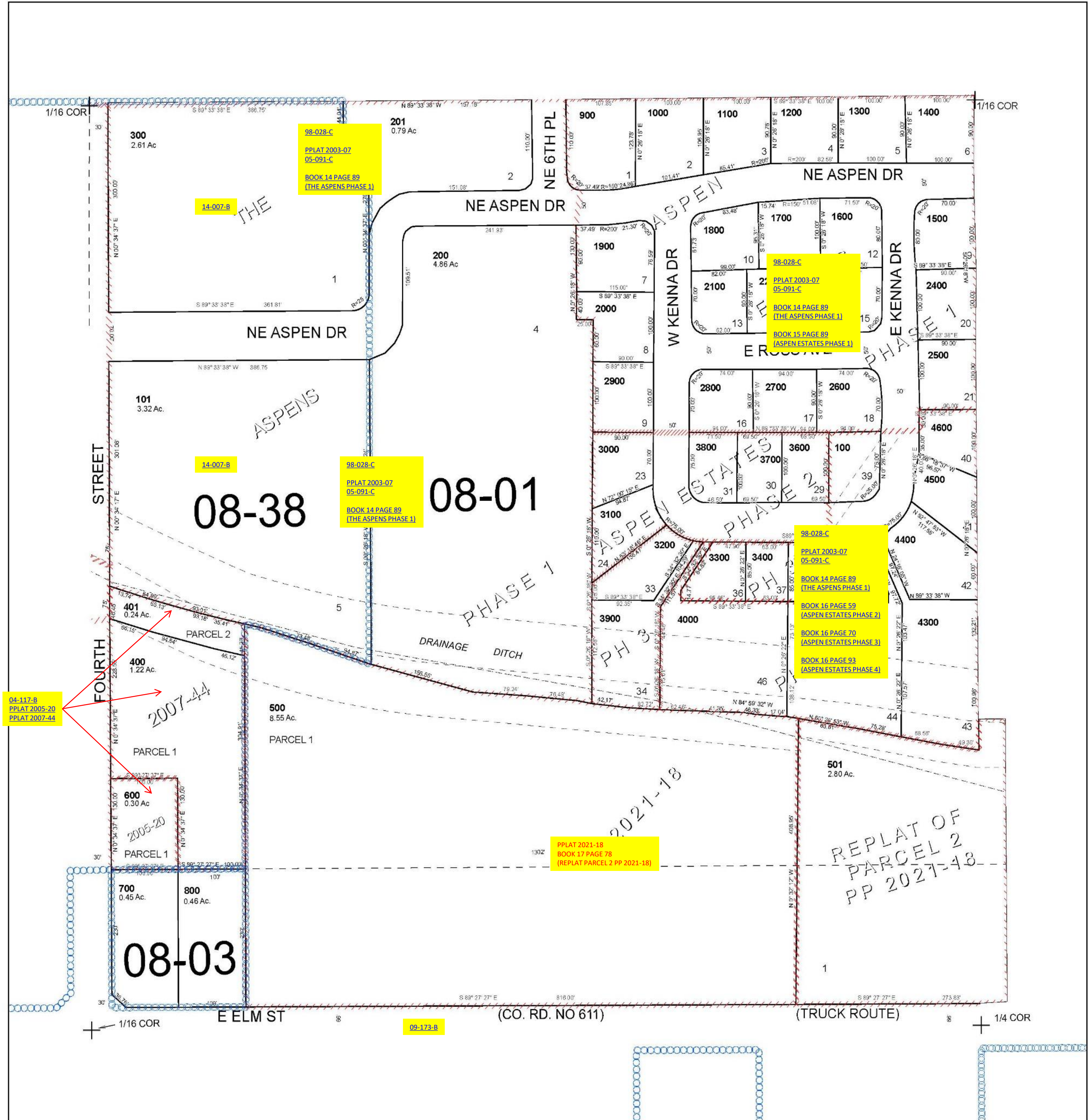
SE 1/4 SW 1/4 SEC 02 T4N R28E WM UMATILLA COUNTY

Hermiston

SCALE 1" = 100'

4N 28 02CD

See Map 4N 28 02B



See Map 4N 28 03D

See Map 4N 28 02D

Revised 8/26/2024

See Map 4N 28 11BA

4N 28 02CD