

ALSO SEE SURVEY S-156-C; CORNER RECORDS; G.L.O. SURVEYS

This map was prepared for Assessment & Taxation purposes only and was NOT prepared nor is it suitable for legal, engineering or surveying purposes.

SE 1/4 SEC 02 T4N R28E WM UMATILLA COUNTY

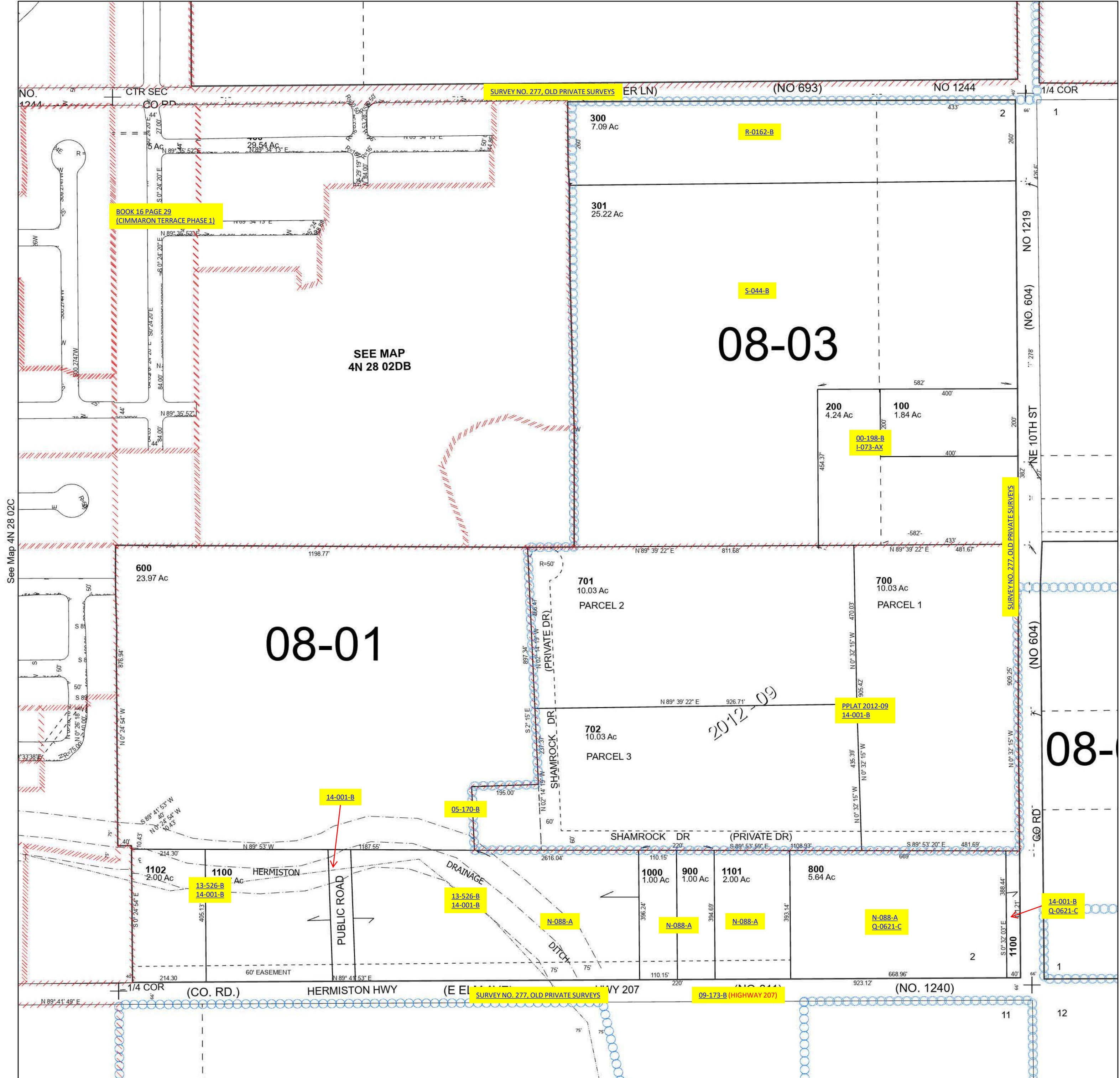
4N 28 02D

Hermiston

SCALE 1" = 200'

See Map 4N 28 02A

Cancelled Tax Lots
400
500
1200



See Map 4N 28 02C

See Map 4N 28 01C

Revised 10/3/2023

See Map 4N 28 11

4N 28 02D