

ALSO SEE SURVEYS 15-006-C, 07-074-C, 09-039-A, 94-171-G, Q-0566-AX, Q-1332-A, S-156-C; CORNER RECORDS; G.L.O. SURVEYS

This map was prepared for Assessment & Taxation purposes only and was NOT prepared nor is it suitable for legal, engineering or surveying purposes.

Cancelled Tax Lots

- 108
- 201
- 203
- 500
- 501
- 804
- 808

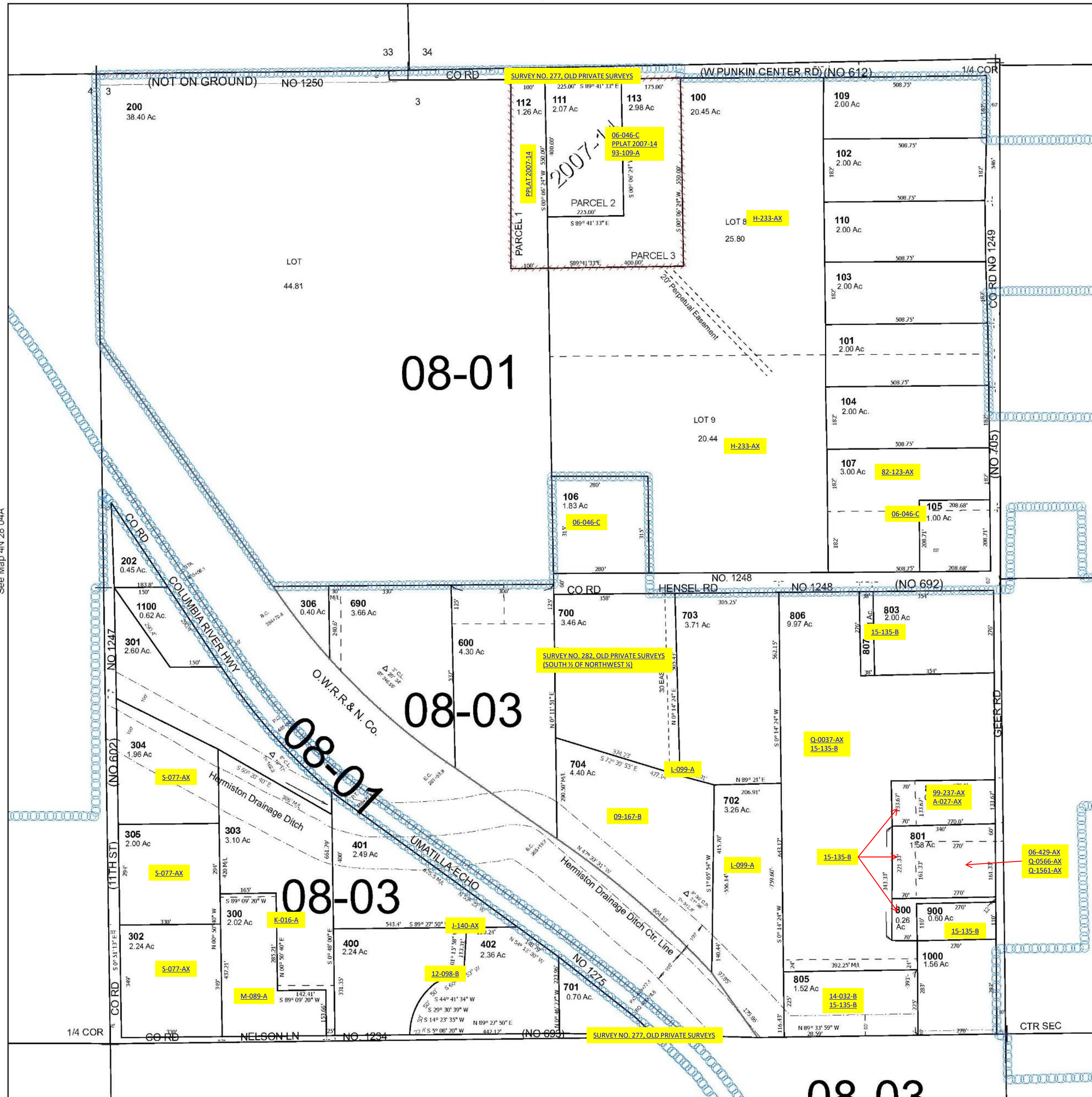
NW 1/4 SEC 03 T4N R28E WM UMATILLA COUNTY

4N 28 03B

Hermiston

SCALE 1" = 200'

See Map 5N 28 34C



See Map 4N 28 04A

See Map 4N 28 03AB

Revised 12/11/2024

See Map 4N 28 03C

4N 28 03B