

ALSO SEE SURVEYS 15-006-C, Q-0565-AX, Q-1349-AX, 07-074-C, Q-0566-AX, Q-1332-AX, S-156-C; CORNER RECORDS; G.L.O. SURVEYS

This map was prepared for Assessment & Taxation purposes only and was NOT prepared nor is it suitable for legal, engineering or surveying purposes.

SE 1/4 SEC 03 T4N R28E WM UMATILLA COUNTY

4N 28 03D

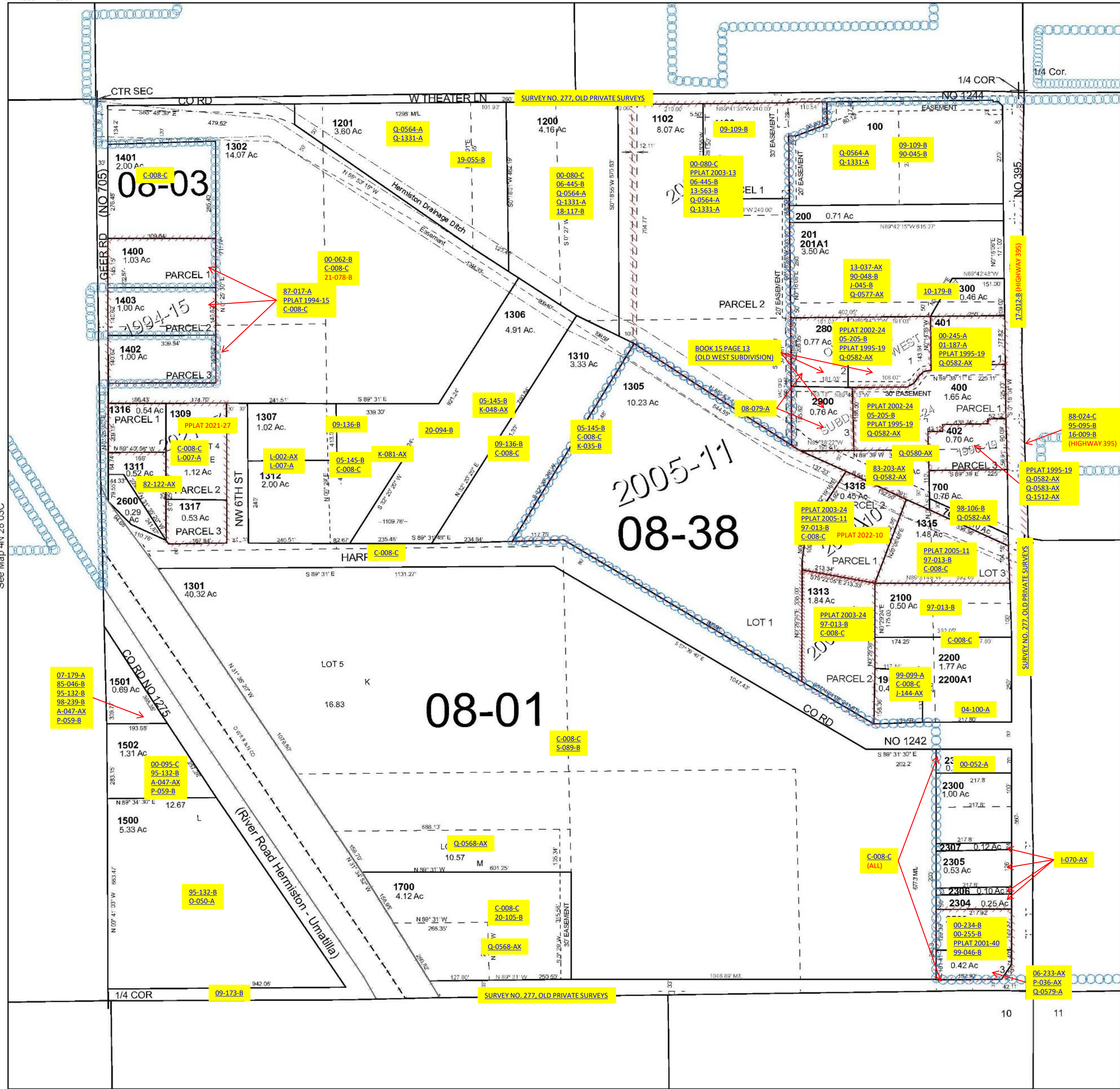
Hermiston

SCALE 1" = 200'

See Map 4N 28 03A

Cancelled Tax Lots

101	1303
102	1308
130	1600
404	1701
500	1800
800	2000
900	2301
1000	2303
1101	2400
1300	2501



See Map 4N 28 03C

See Map 4N 28 02C

Revised 8/26/2024

See Map 4N 28 10AB

4N 28 03D