

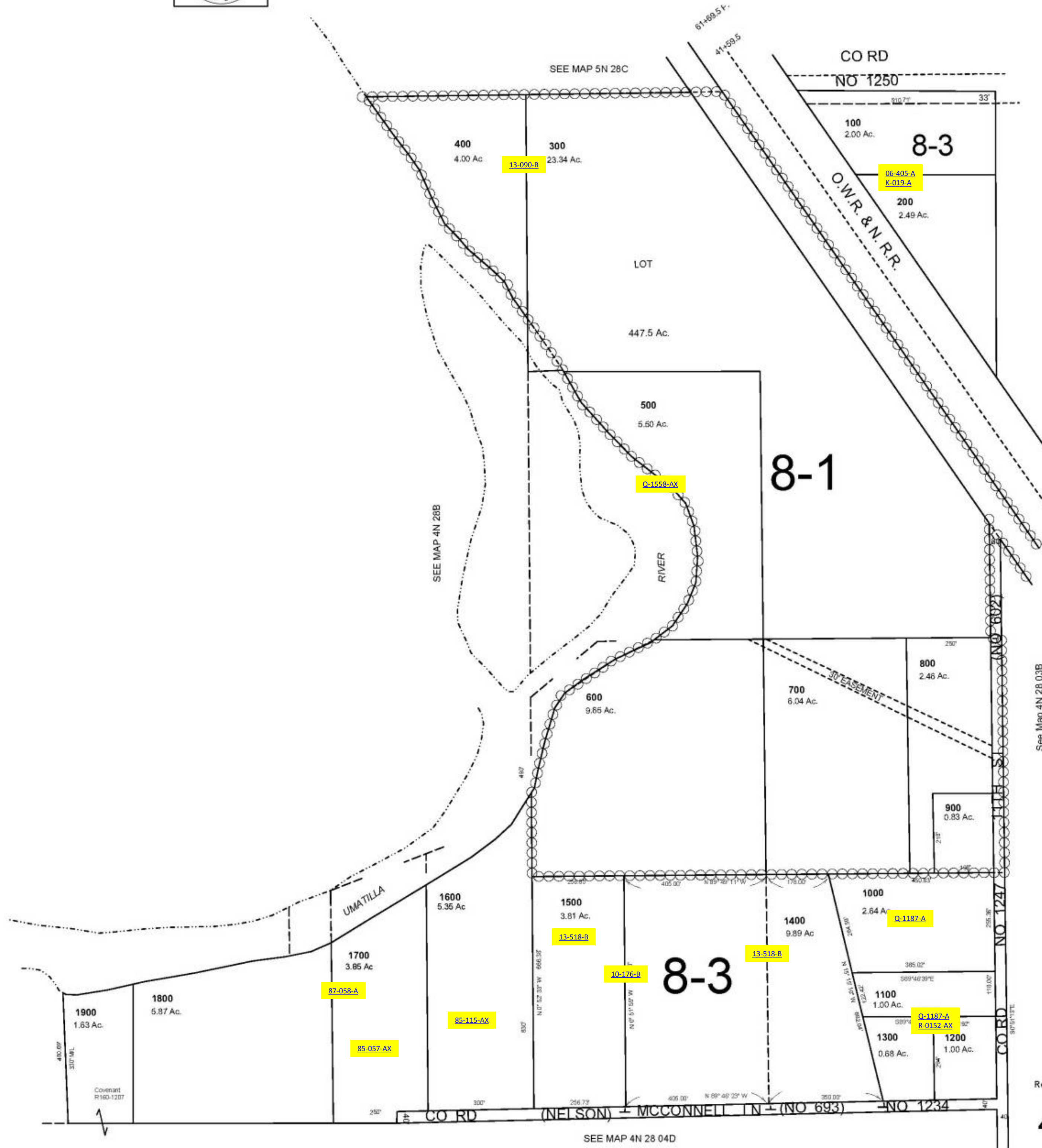
This map was prepared for Assessment & Taxation purposes only and was NOT prepared nor is it suitable for legal, engineering or surveying purposes.



NE1/4 SEC 4 T 4N R 28E WM UMATILLA COUNTY

SCALE: 1" = 200'

4N 28 04A
AERIAL PHOTO NO. NZ-2P-25-26
1P-119-120



Revised: 11/12/13

4N 28 04A