

This map was prepared for Assessment and Taxation purposes only and has NOT been prepared for legal, engineering or surveying purposes.

Revised: 1/8/08



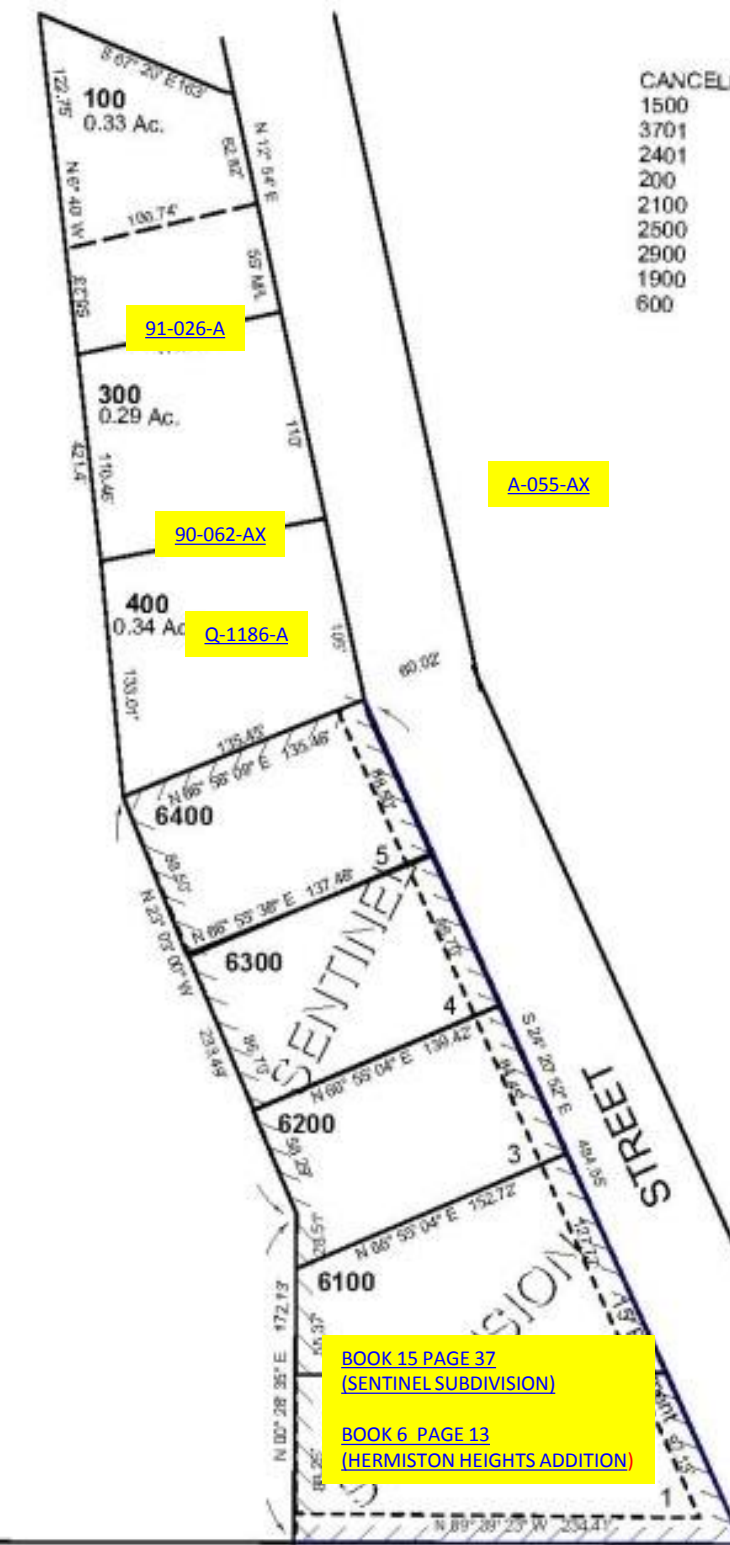
# SW1/4 NE1/4 SEC 10 T4N R28E WM UMATILLA COUNTY, OR

SCALE: 1" = 100'

## 4N2810AC

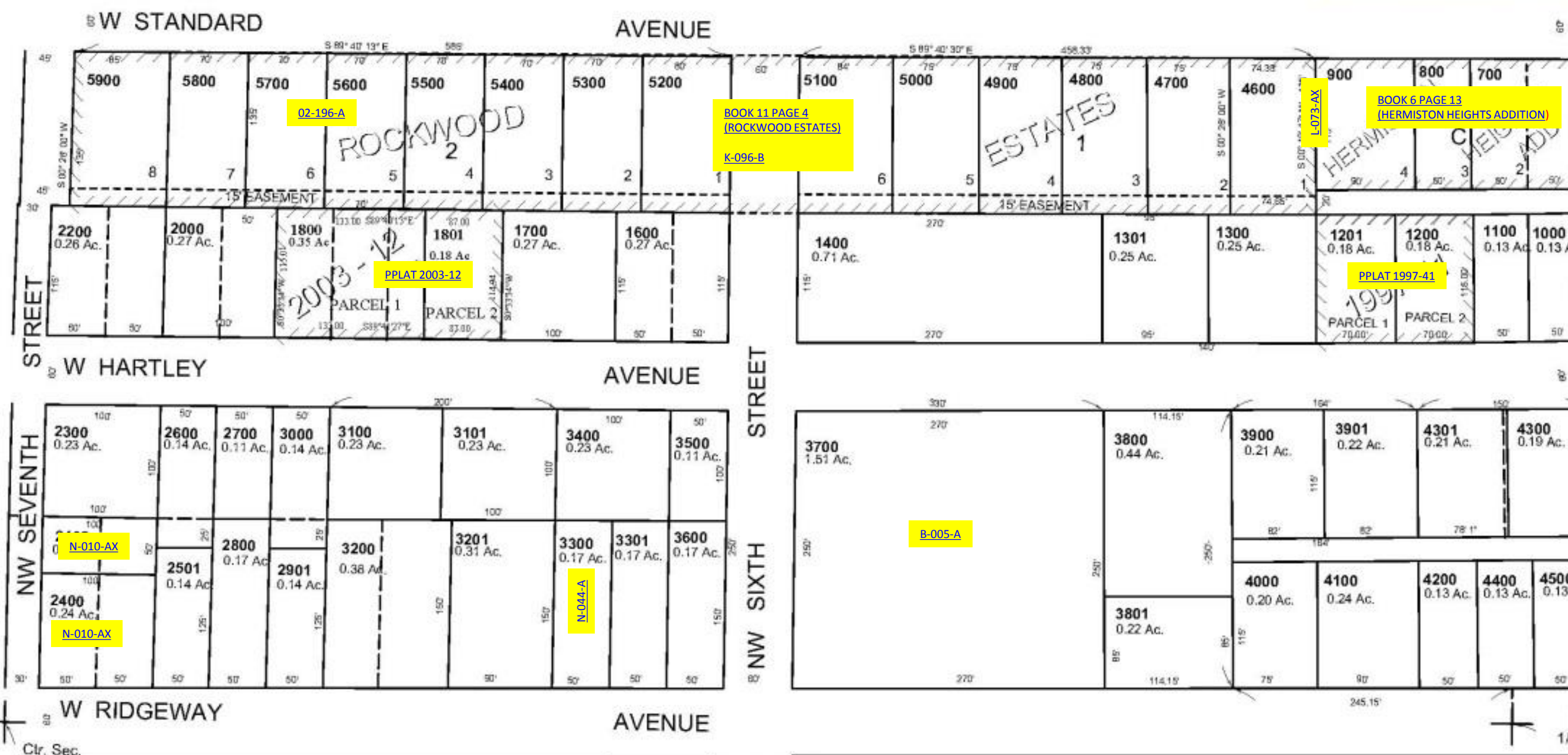
HERMISTON  
Hermiston Heights Add  
Blk B & C  
Rockwood Est.  
Aerial Photo No. NZ-1P-122

See Map 4N 28 10AB



# 8-1

See Map 4N 28 10



See Map 4N 28 10B

See Map 4N 28 10AD

See Map 4N 28 10DB

## 4N2810AC