

ALSO SEE SURVEYS Q-0620-AX, Q-1360-AX, 05-013-G

This map was prepared for Assessment & Taxation purposes only and was NOT prepared nor is it suitable for legal, engineering or surveying purposes.

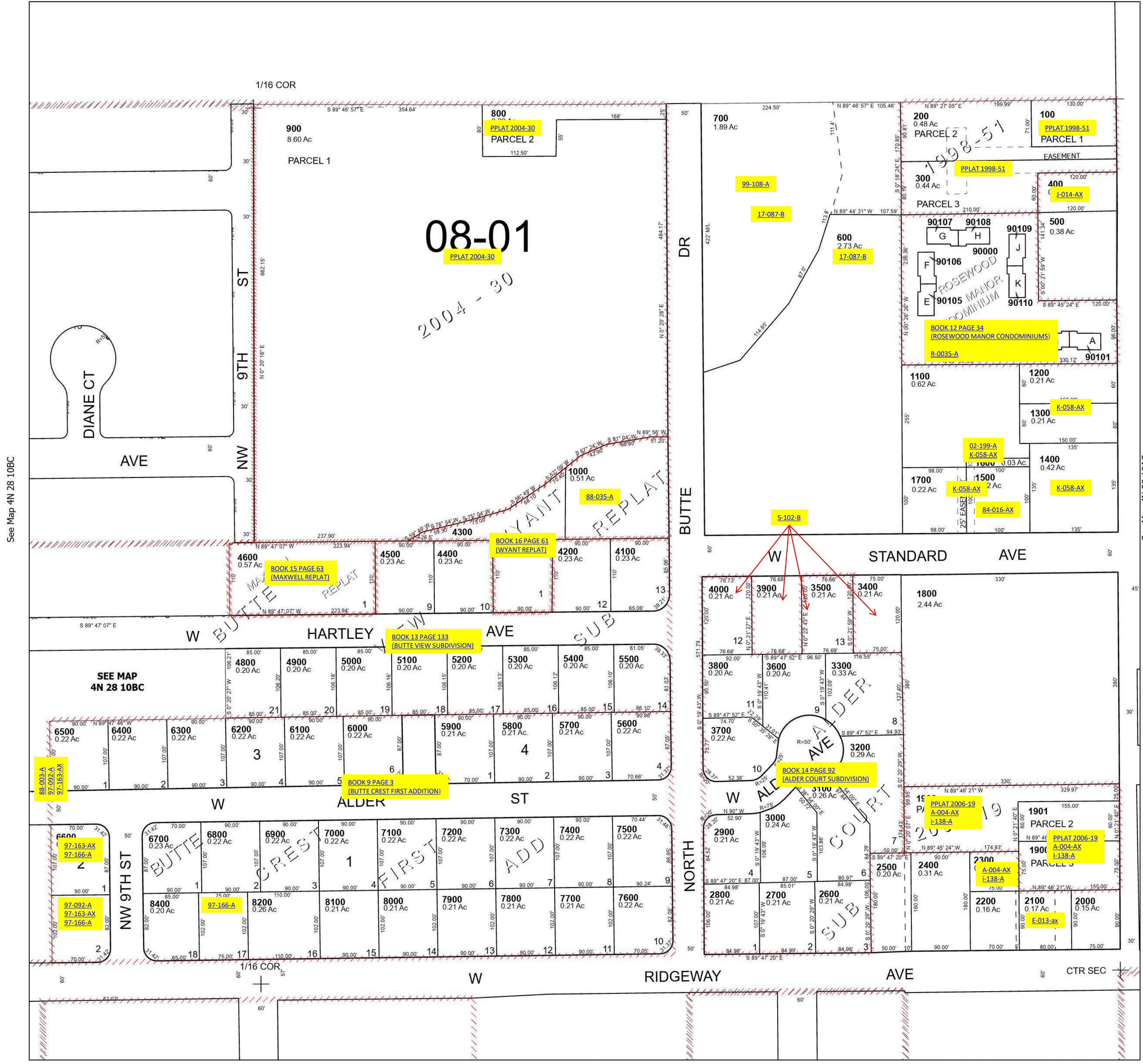
Cancelled Tax Lots
4700

SE 1/4 NW 1/4 SEC 10 T4N R28E WM UMATILLA COUNTY

Hermiston

See Map 4N 28 10B

4N 28 10BD



See Map 4N 28 10BC

See Map 4N 28 10AC

Revised 11/14/2023

See Map 4N 28 10CA

4N 28 10BD