

ALSO SEE SURVEYS 05-065-C, 05-013-G

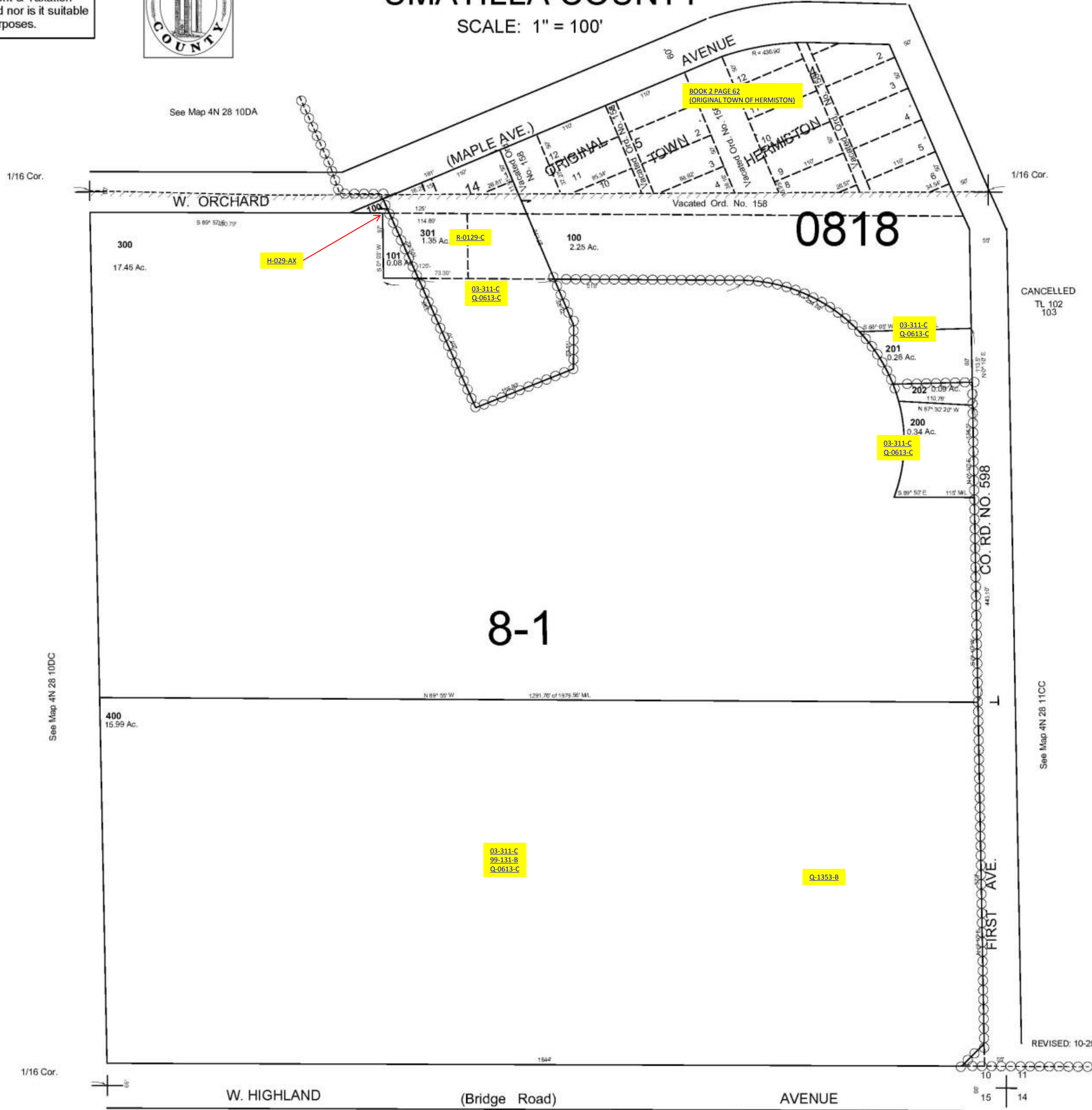
This map was prepared for Assessment & Taxation purposes only and was NOT prepared nor is it suitable for legal, engineering or surveying purposes.



SE1/4 SE1/4 SEC 10T4N R28E WM UMATILLA COUNTY

4N2810DD
AERIAL PHOTO NO 1P-123

SCALE: 1" = 100'



See Map 4N 28 10DC

See Map 4N 28 11CC

1/16 Cor.

REVISED: 10-29-13

W. HIGHLAND

(Bridge Road)

AVENUE

FIRST AVE.

See Map 4N 28 15AA

4N2810DD