

ALSO SEE SURVEY 05-013-G

This map was prepared for Assessment & Taxation purposes only and was NOT prepared nor is it suitable for legal, engineering or surveying purposes.

# NE 1/4 NW 1/4 SEC 11 T4N R28E WM UMATILLA COUNTY

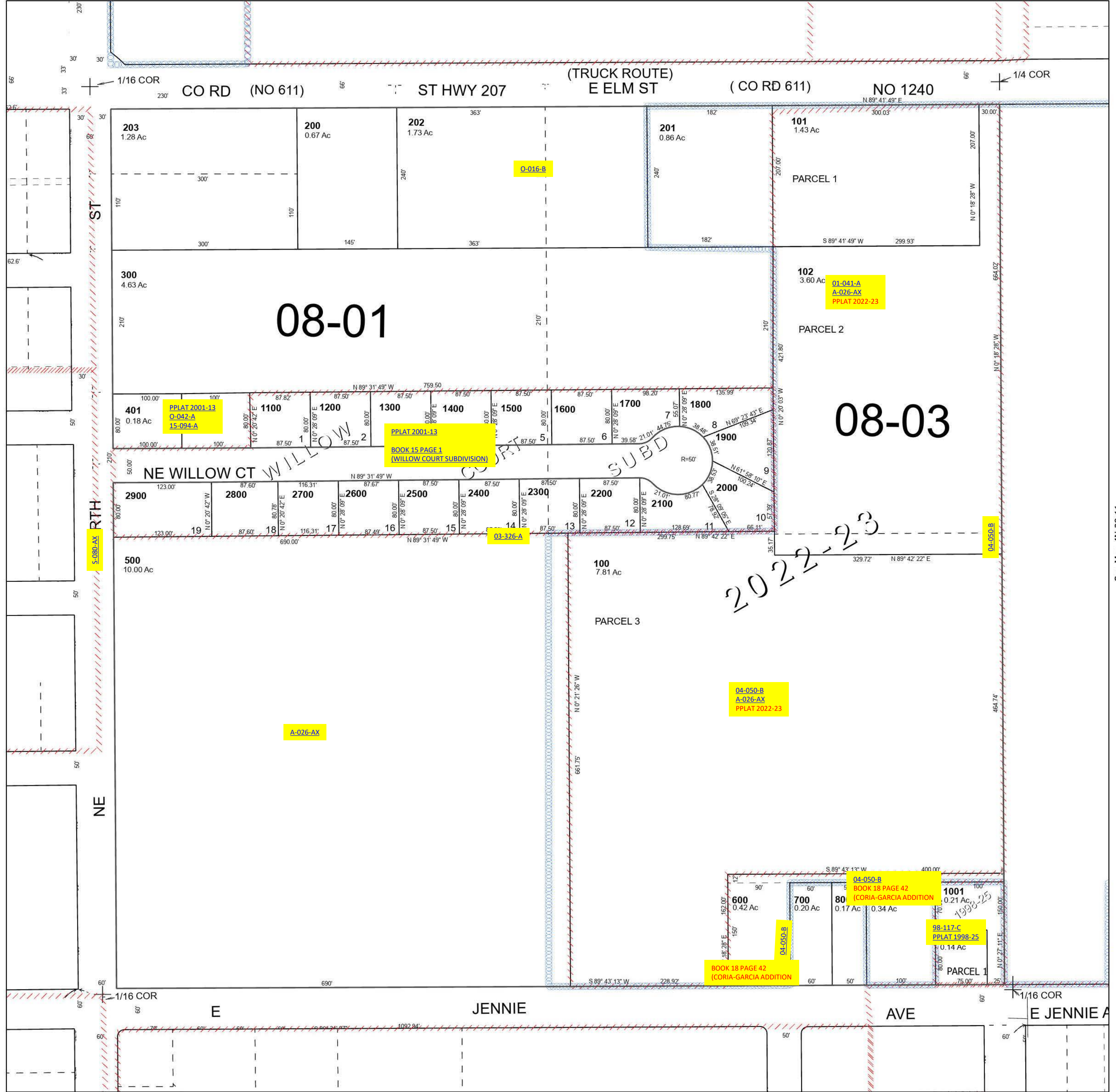
Hermiston

SCALE 1" = 100'

## 4N 28 11BA

Cancelled Tax Lots  
400  
403  
404

See Map 4N 28 02CD



See Map 4N 28 11BB

See Map 4N 28 11

Revised 5/4/2023

See Map 4N 28 11BD

## 4N 28 11BA