

ALSO SEE SURVEYS 15-006-C, 05-013-G

This map was prepared for Assessment & Taxation purposes only and was NOT prepared nor is it suitable for legal, engineering or surveying purposes.

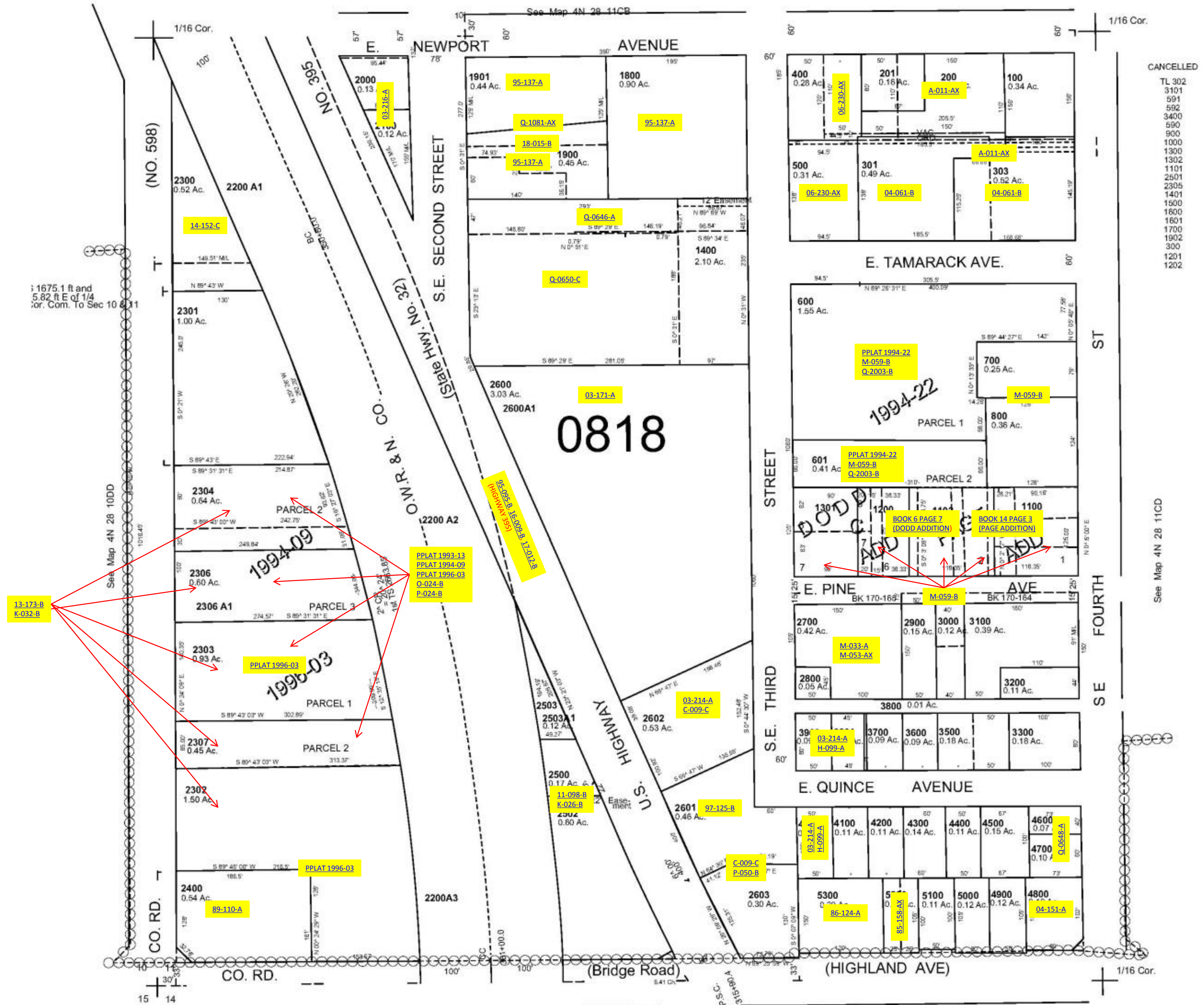


SW1/4 SW1/4 SEC 11 T4N R28E WM UMATILLA COUNTY

4N2811CC

AERIAL PHOTO NO. NZ-1P-123

SCALE: 1" = 100'



CANCELLED

TL 302
3101
391
592
3400
590
900
1000
1300
1302
1101
2501
2305
1401
1500
1600
1601
1700
1902
300
1201
1202

See Map 4N 28 11CC

See Map 4N 28 14BB

Revised: 10-30-13

4N2811CC