

ALSO SEE SURVEYS 05-088-C, 13-226-B (HUMBERT ADDITION), 07-074-C, 13-159-B, 13-163-C, S-156-C; CORNER RECORDS; G.L.O. SURVEYS

This map was prepared for Assessment & Taxation purposes only and was NOT prepared nor is it suitable for legal, engineering or surveying purposes.

SW 1/4 SEC 12 T4N R28E WM UMATILLA COUNTY

4N 28 12C

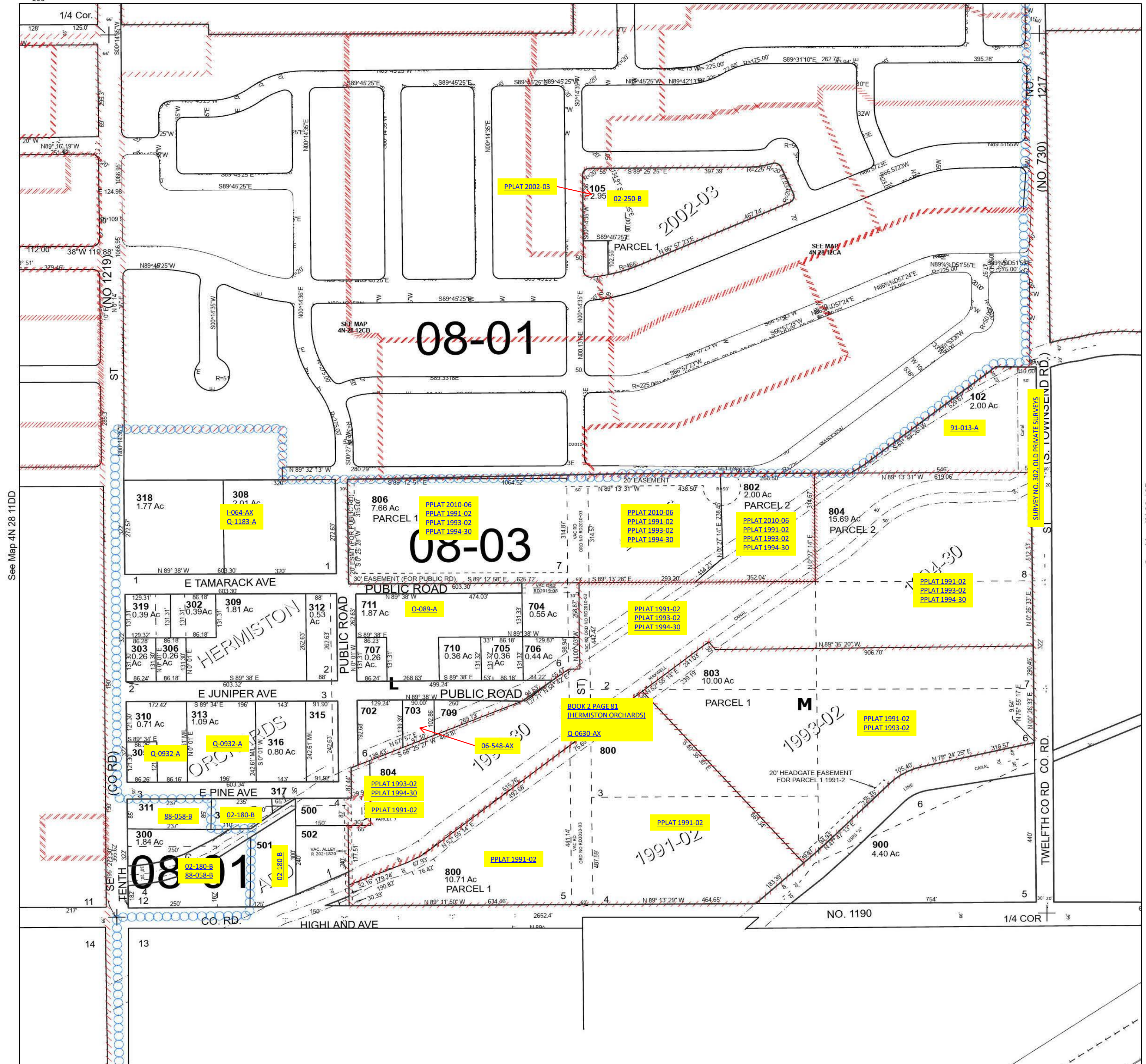
Hermiston

SCALE 1" = 200'

See Map 4N 28 12CA

Cancelled Tax Lots

100	600
101	700
103	701
104	708
200	801
301	805
307	
314	
400	
503	



See Map 4N 28 11DD

See Map 4N 28 12D

Revised 12/27/2023

See Map 4N 28 13

4N 28 12C