

ALSO SEE SURVEYS 14-067-AX, 95-044-B, 95-145-B, 96-048-B, 96-081-C, 05-013-G

This map was prepared for assessment purposes

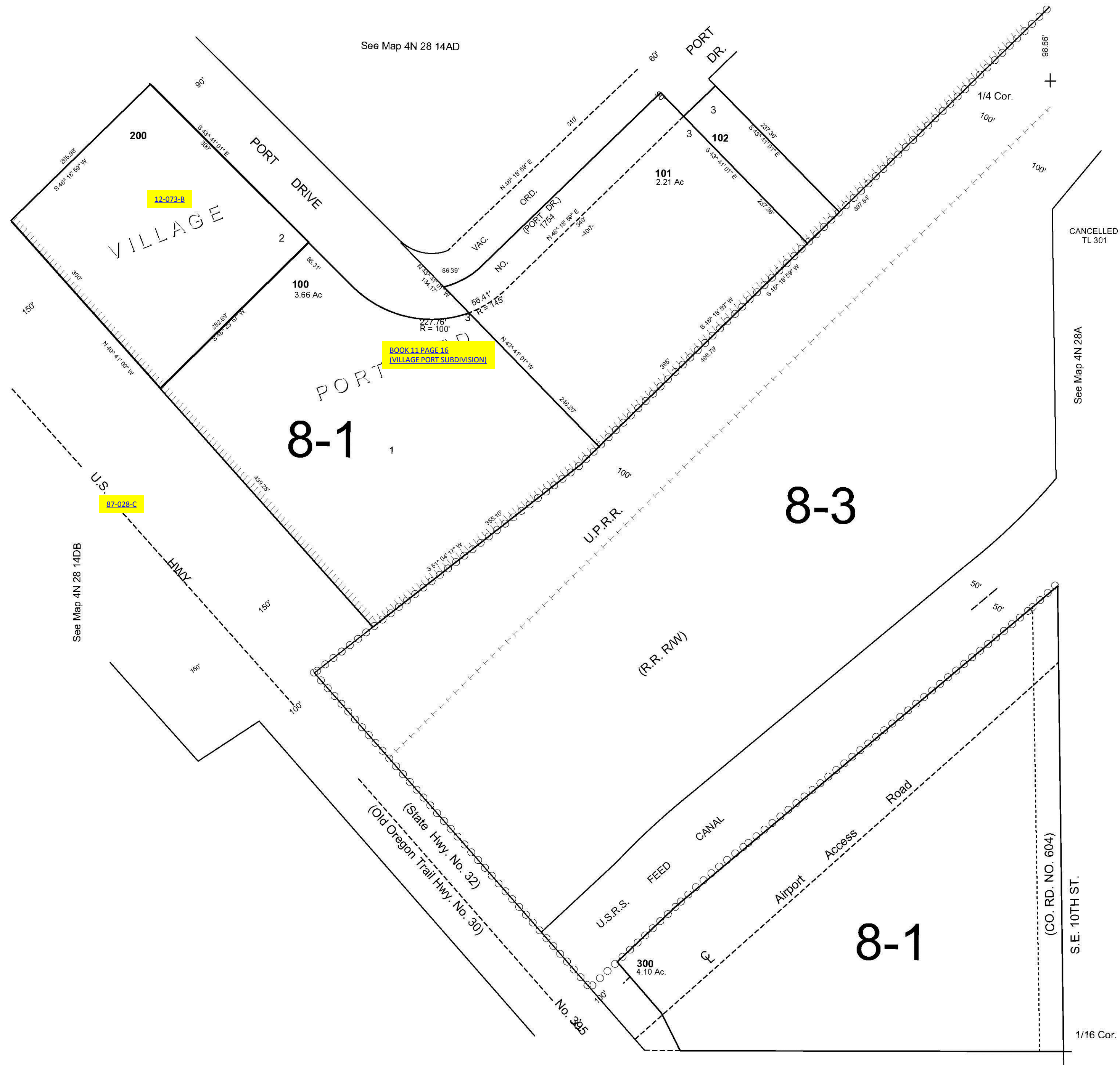
SCALE 1"=100'

NE1/4 SE1/4 SEC 14 T4N R28E WM UMATILLA COUNTY

2/6/06

4N 28 14DA

AERIAL PHOTO NO. NZ IP-123



See Map 4N 28 A

4N 28 14DA