

ALSO SEE SURVEYS 15-006-C, 05-013-G

This map was prepared for Assessment & Taxation purposes only and was NOT prepared nor is it suitable for legal, engineering or surveying purposes.

# NE 1/4 NE 1/4 SEC 15 T4N R28E WM UMATILLA COUNTY SCALE 1" = 100'

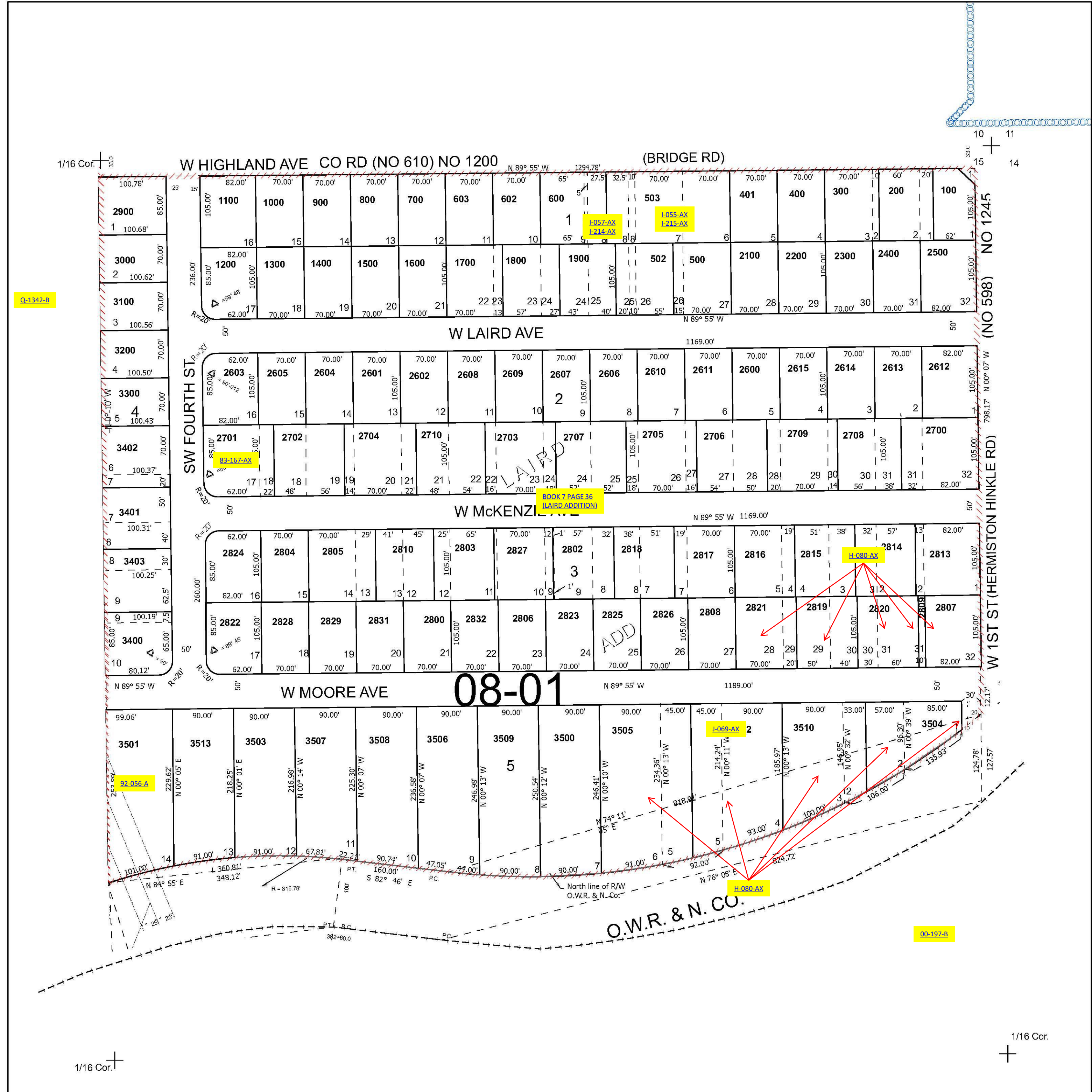
Hermiston

## 4N 28 15AA

Cancelled Tax Lots

- 501 3512
- 601 3600
- 604 3601
- 605 3602
- 2000 3700
- 2801
- 2811
- 2812
- 2830
- 3511

See Map 4N 28 10DD



See Map 4N 28 15AB

See Map 4N 28 14BB

Revised 11/20/2024

See Map 4N 28 15AD

## 4N 28 15AA