

ALSO SEE SURVEYS 15-006-C, 05-013-G

This map was prepared for Assessment & Taxation purposes only and was NOT prepared nor is it suitable for legal, engineering or surveying purposes.

Cancelled Tax Lots
100
2100
3000

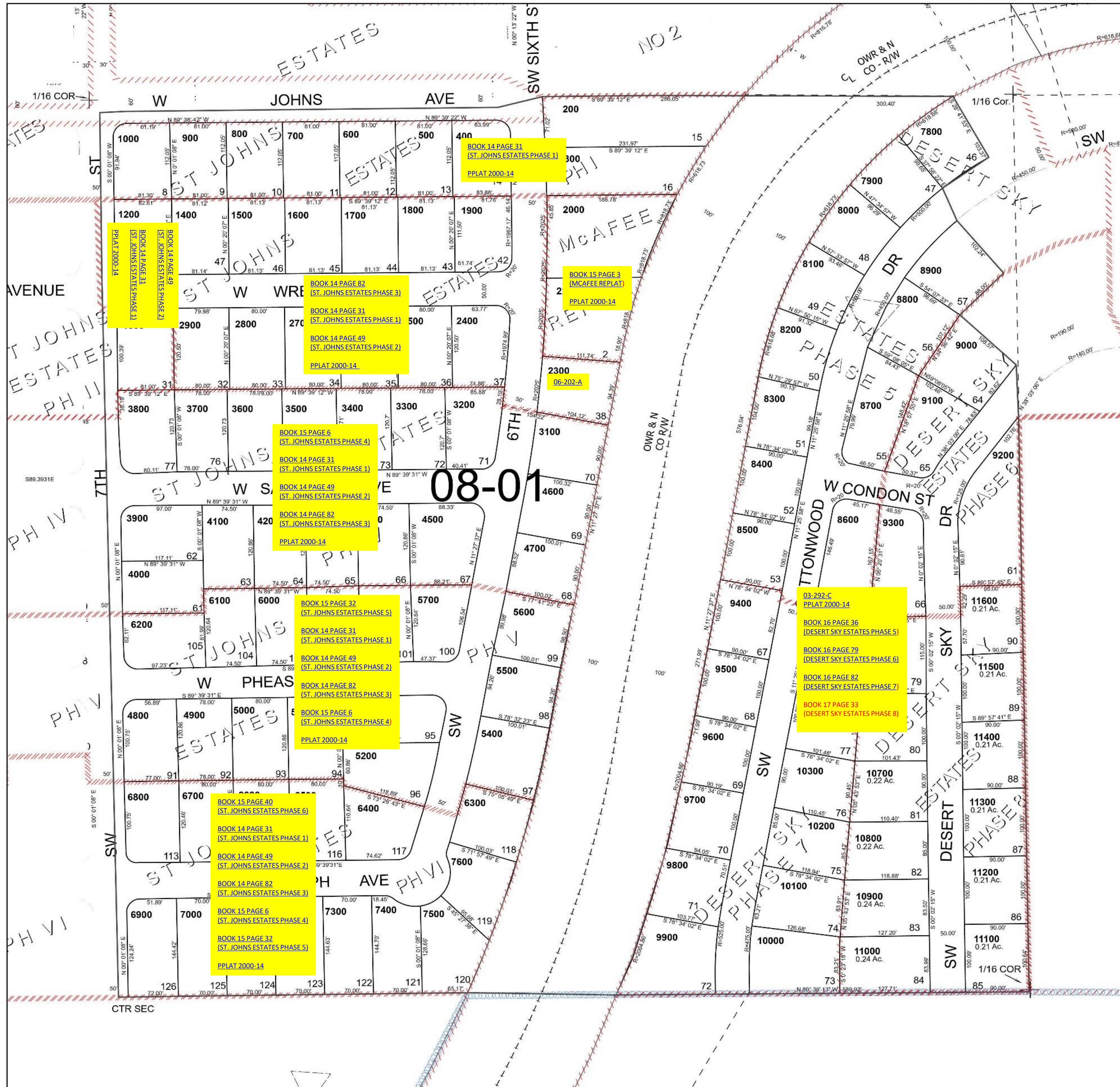
SW 1/4 NE 1/4 SEC 15 T4N R28E WM UMATILLA COUNTY

Hermiston

SCALE 1" = 100'

4N 28 15AC

See Map 4N 28 15AB



See Map 4N 28 15BD

See Map 4N 28 15AD

Revised 7/7/2023

See Map 4N 28 15CA

4N 28 15AC