

This map was prepared for Assessment & Taxation purposes only and was NOT prepared nor is it suitable for legal, engineering or surveying purposes.

NW 1/4 SW 1/4 SEC 15 T4N R28E WM UMATILLA COUNTY

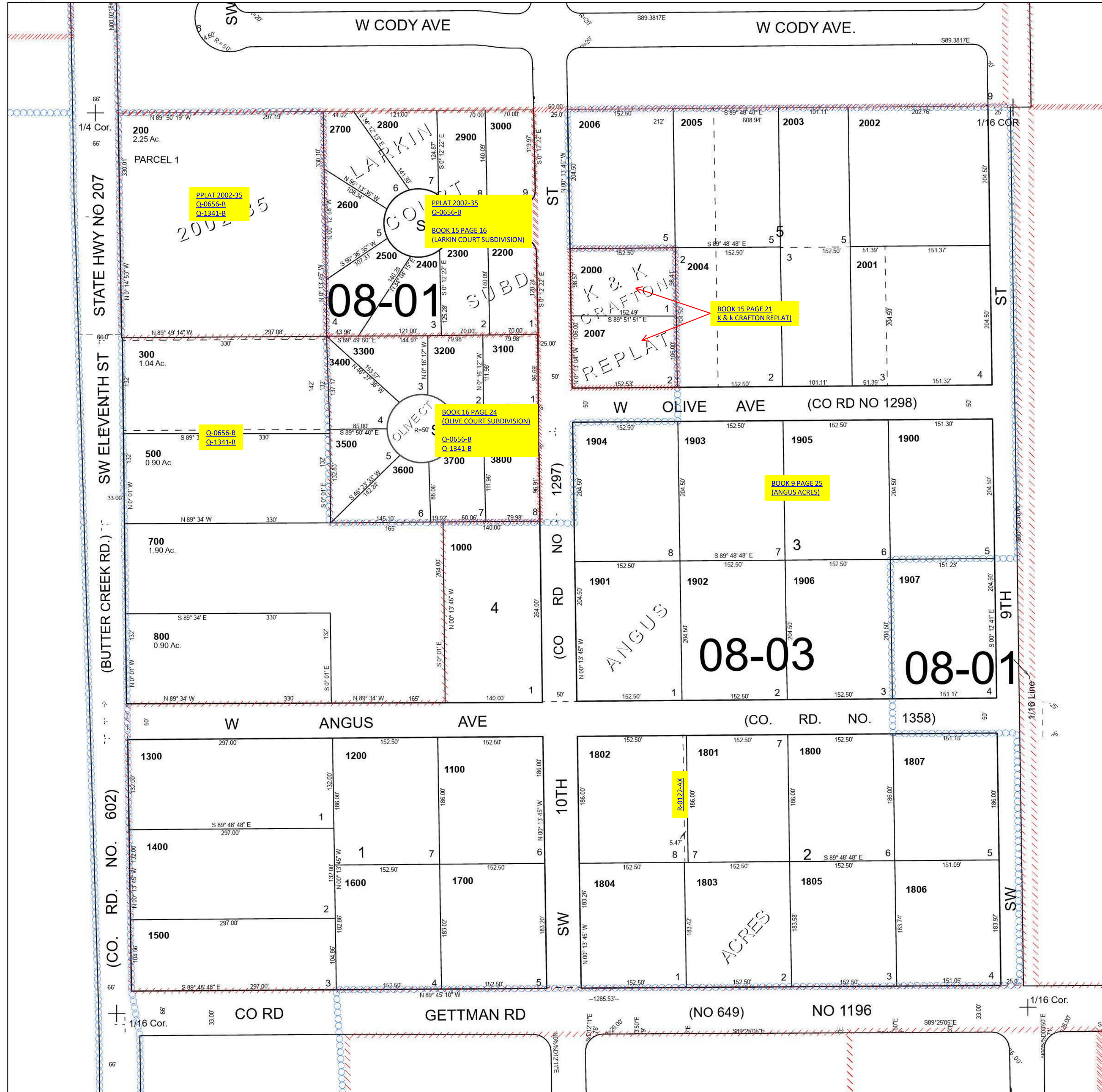
Hermiston

SCALE 1" = 100'

4N 28 15CB

- Cancelled Tax Lots
- | | |
|-----|------|
| 100 | 1808 |
| 101 | 2100 |
| 102 | |
| 103 | |
| 104 | |
| 105 | |
| 301 | |
| 400 | |
| 600 | |
| 900 | |

See Map 4N 28 15BC



See Map 4N 28 16D

See Map 4N 28 15CA

Revised 11/9/2023

See Map 4N 28 15

4N 28 15CB