

ALSO SEE SURVEY 03-292-C

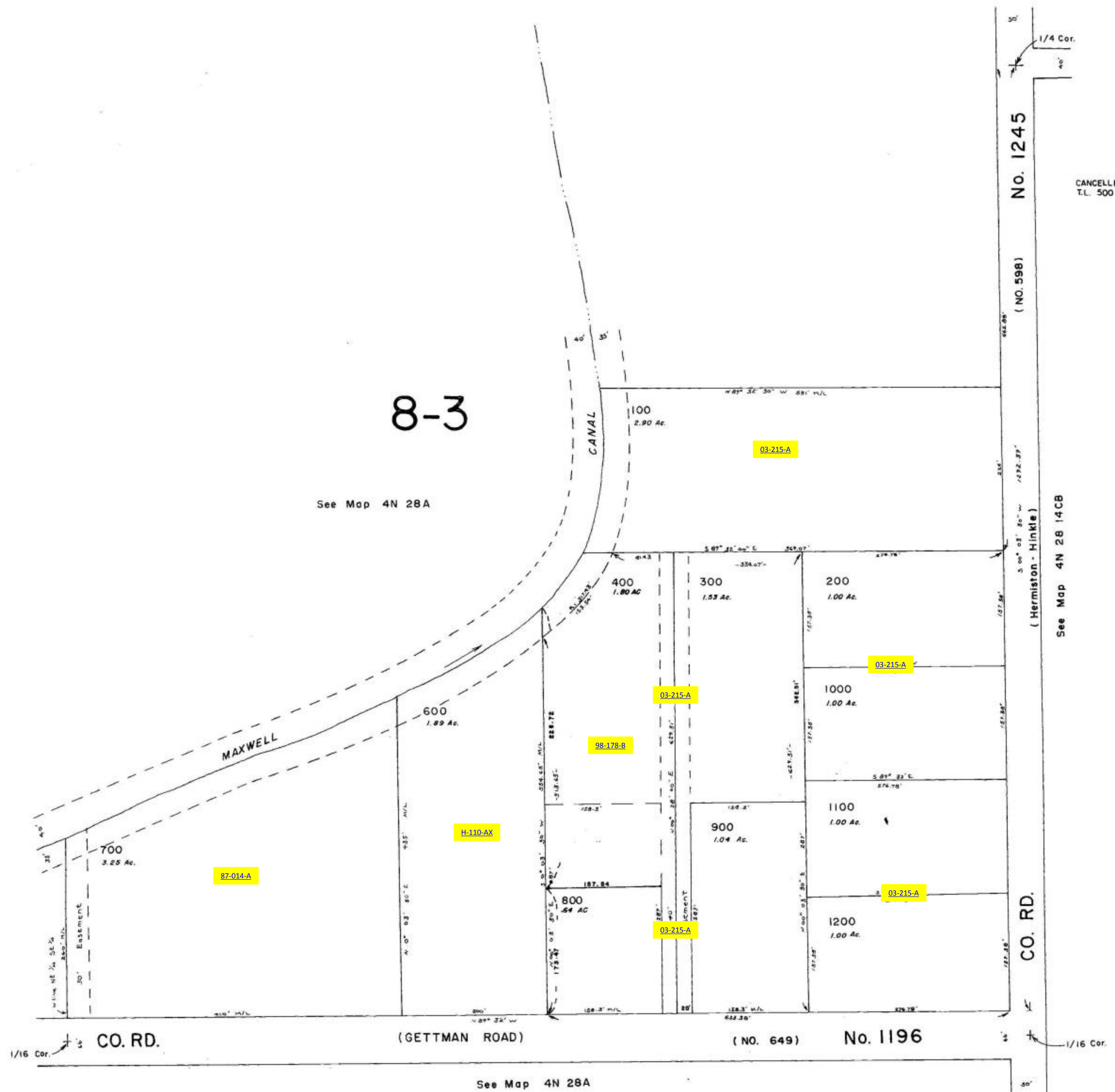
THIS MAP WAS PREPARED FOR
ASSESSMENT PURPOSES ONLY

NE1/4 SE1/4 Sec.15 T.4N.R.28E.W.M.
UMATILLA COUNTY

4N 28 15DA

Aerial Photo No. 2P-22

1"=100'



4N 28 15DA