

ALSO SEE SURVEYS 07-074-C, 13-015-C, F-007-C; CORNER RECORDS; G.L.O. SURVEYS

This map was prepared for assessment purposes

# SE1/4 SEC 19 T4N R28E WM UMATILLA COUNTY SCALE 1"=200'

4N 28 19D  
AERIAL PHOTO NO. 2P-26

14-025-C  
(WESTLAND RD)

(WESTLAND RD)  
CO. RD. NO. 1215<sup>00</sup>

800  
67.88 Ac.

See Map 4N 28 19A

17-001-C  
(COTTONWOOD BEND ROAD)

See Map 4N 28 C

CO. RD. COTTONWOOD BEND No. 1327

## 0803

WESTLAND

IRRIG.

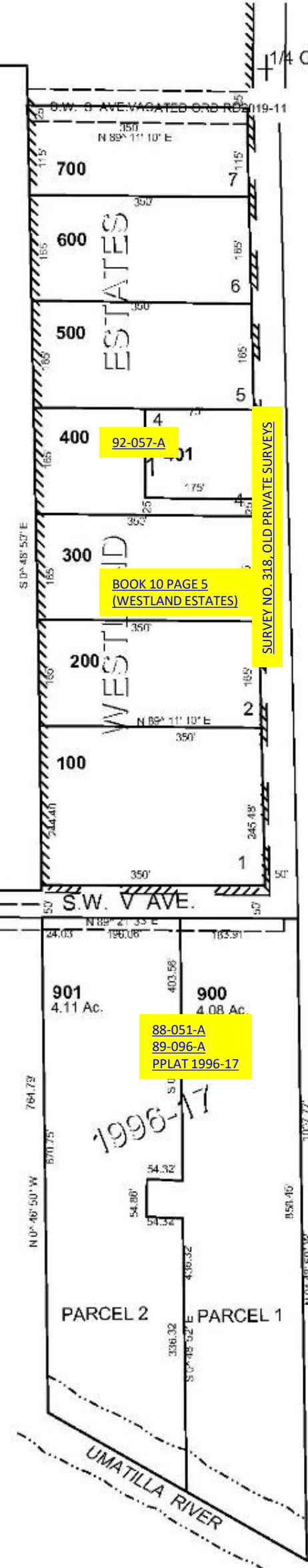
DIST.

CANAL

94-057-C  
(BLOOM ROAD)

CO. RD. (NOT ON GROUND) BLOOM RD. S.W. AVE.

See Map 4N 28 C



CANCELLED  
TL 801

See Map 4N 28 20C

901  
4.11 Ac.

900  
4.08 Ac.

88-051-A  
89-096-A  
PLAT 1996-17

1996-17

PARCEL 2

PARCEL 1

UMATILLA RIVER

1/4 Cor.

SURVEY NO. 318, OLD PRIVATE SURVEYS

19 20  
30 29

REVISED 12-30-19

### 4N2819D