

This map was prepared for Assessment & Taxation purposes only and was NOT prepared nor is it suitable for legal, engineering or surveying purposes.

Cancelled Tax Lots

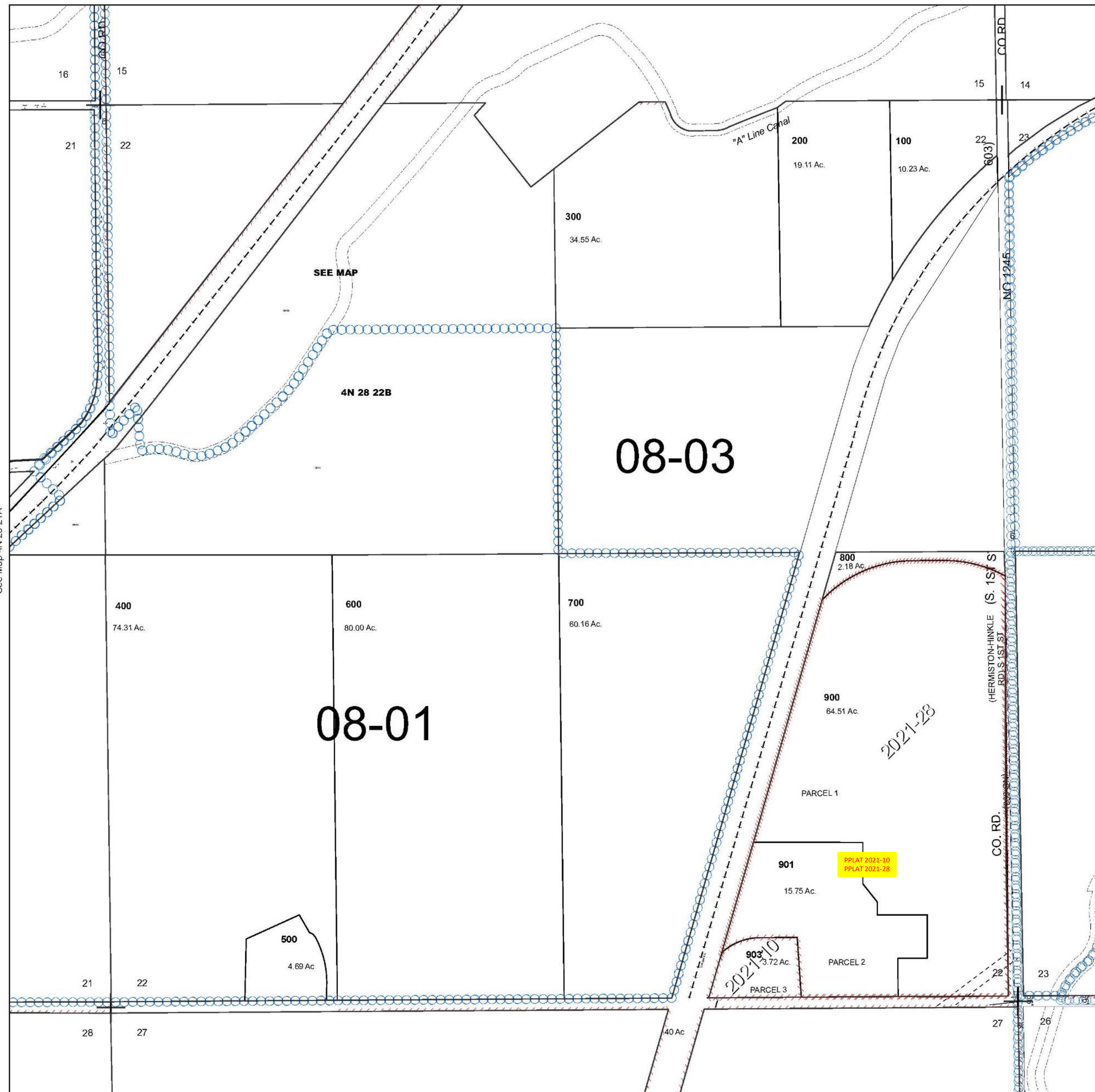
# SEC 22 T4N R28E WM UMATILLA COUNTY

## 4N 28 22

Hermiston

SCALE 1" = 400'

See Map 4N 28 15



See Map 4N 28 21A

See Map 4N 28

Revised 2/21/2023

See Map 4N 28

## 4N 28 22