

ALSO SEE SURVEYS 82-058-B, 92-045-C, 94-171-G, M-079-C, S-156-C; CORNER RECORDS; G.L.O. SURVEYS

This map was prepared for Assessment & Taxation purposes only and was NOT prepared nor is it suitable for legal, engineering or surveying purposes.

Cancelled Tax Lots

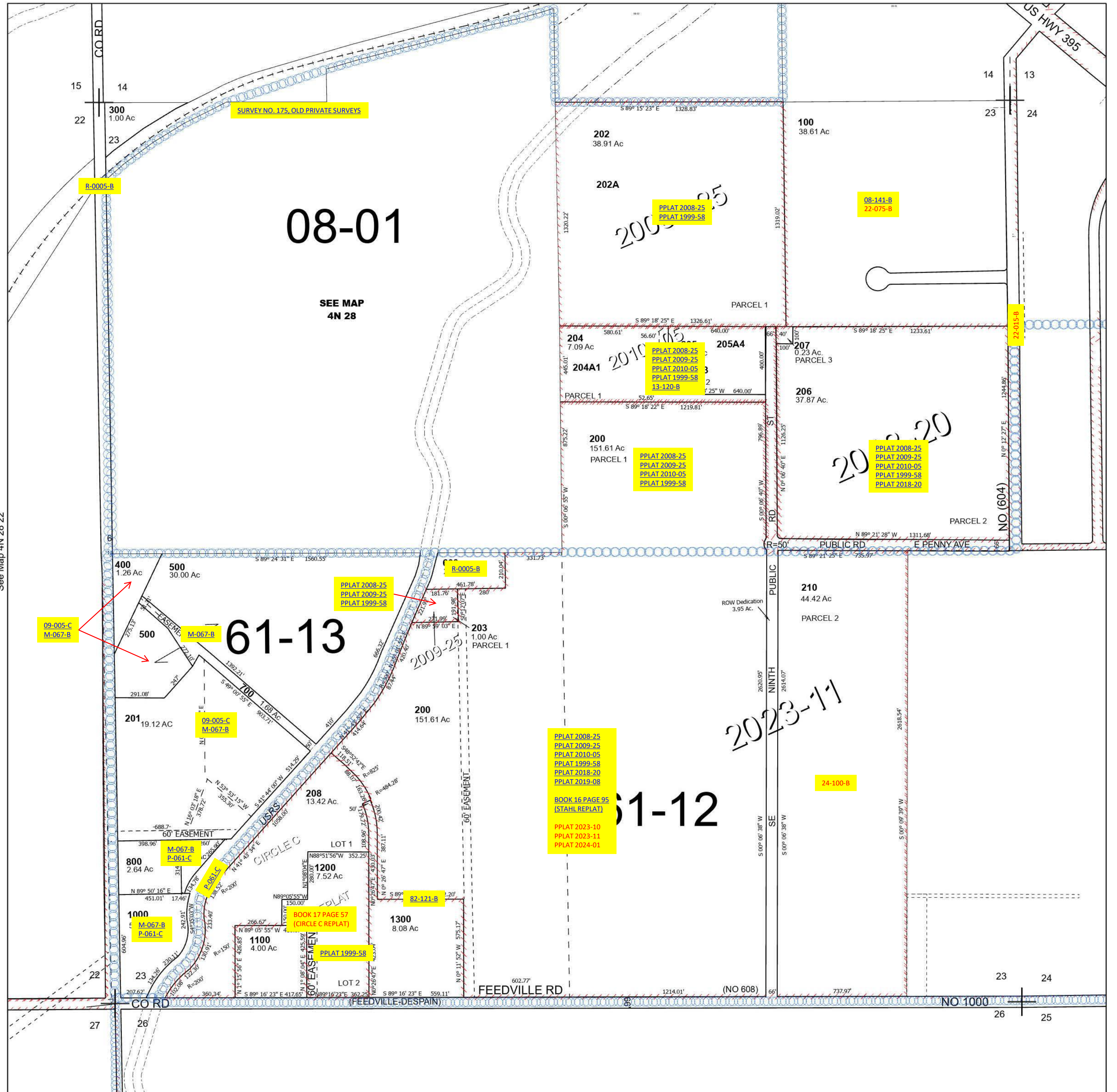
SEC 23 T4N R28E WM UMATILLA COUNTY

4N 28 23

Hermiston

SCALE 1" =400'

See Map 4N 28 14D



See Map 4N 28 22

See Map 4N 28 24B

Revised 12/27/2023

See Map 4N 28

4N 28 23