

ALSO SEE SURVEYS J-134-C, K-038-C, Q-0672-AX, Q-0673-A, 05-013-G, 92-045-C, Q-1327-AX, CORNER RECORDS; G.L.O. SURVEYS

This map was prepared for Assessment & Taxation purposes only and was NOT prepared nor is it suitable for legal, engineering or surveying purposes.

Cancelled Tax Lots  
502

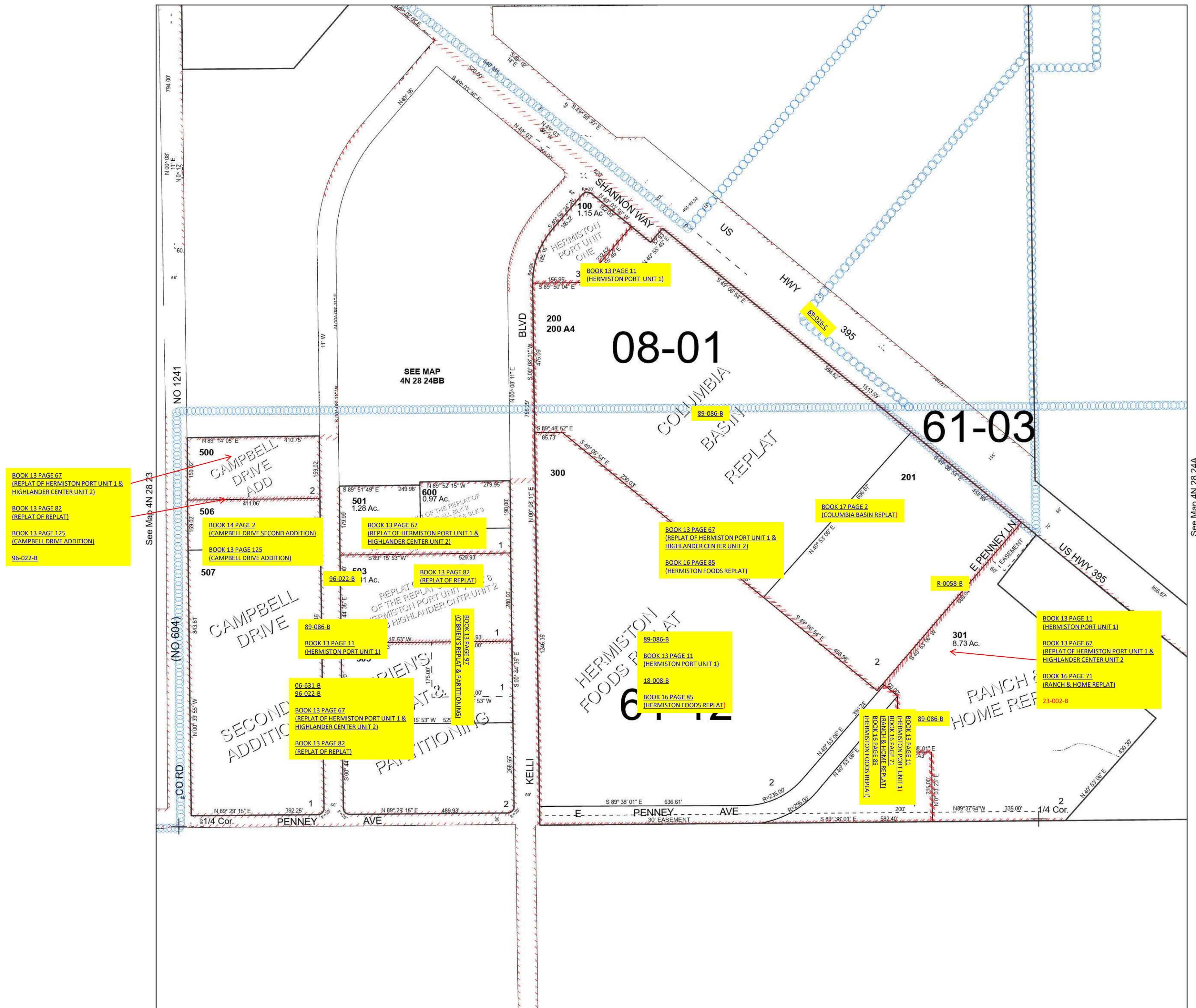
# NW 1/4 SEC 24 T4N R28E WM UMATILLA COUNTY

SCALE 1" = 200'

## 4N 28 24B

Hermiston

See Map 4N 28 24BA



Revised 11/17/2023

See Map 4N 28 24

## 4N 28 24B