

ALSO SEE SURVEYS 13-015-C, N-011-A, P-062-C, Q-0697-C, Q-1506-AX, 02-160-B, 03-054-C, 07-074-C, 94-171-G; CORNER RECORDS; G.L.O. SURVEYS

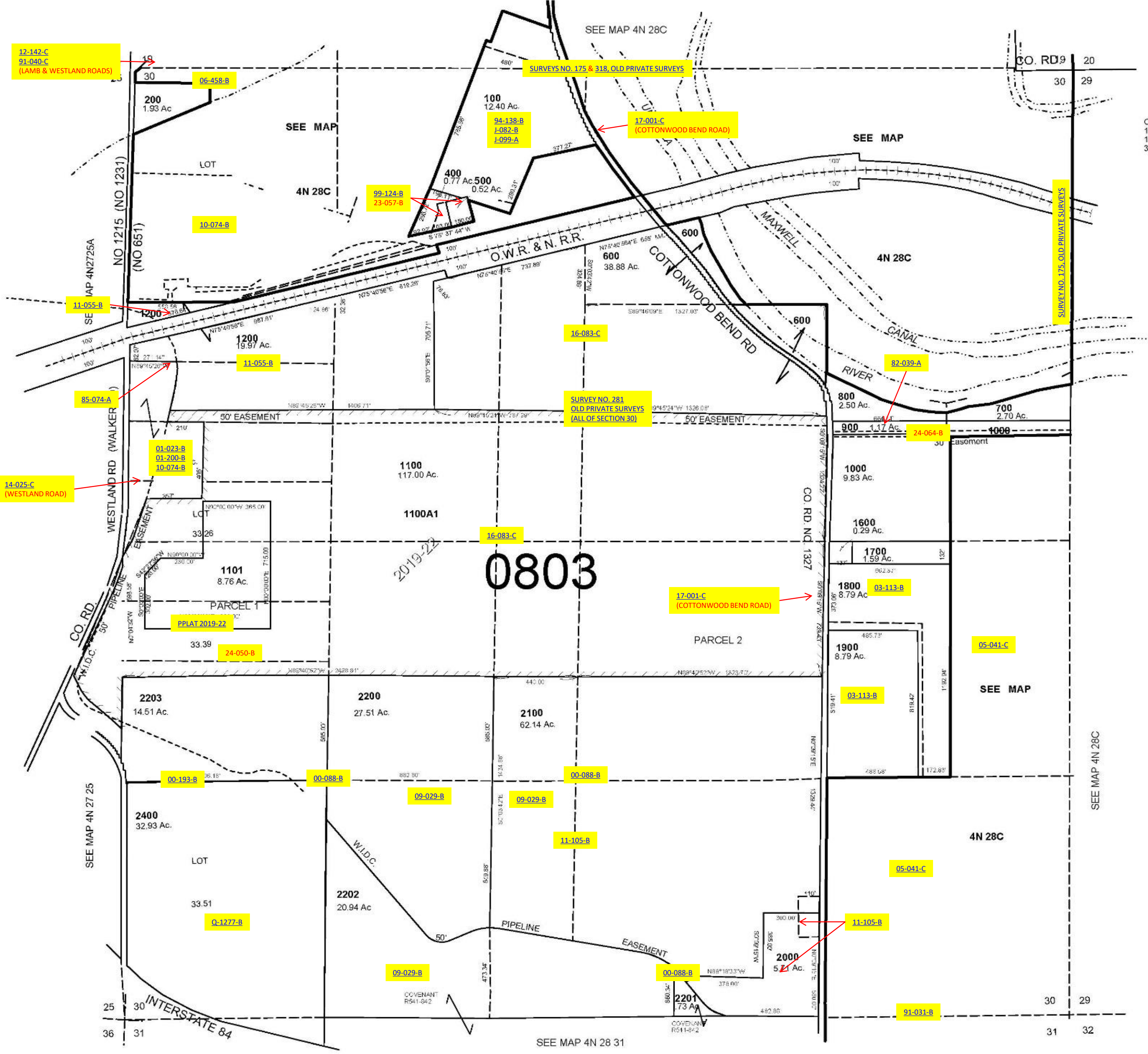
This map was prepared for Assessment & Taxation purposes only and was NOT prepared nor is it suitable for legal, engineering or surveying purposes.

# SEC 30 T4N R28E WM UMATILLA COUNTY

1"=400'

# 4N 28 30

AERIAL PHOTO NO 2P 25-26  
& 39-40



CANCELLED NOS  
1300  
1400  
300

REVISED:12-04-19

# 4N 28 30