

ALSO SEE SURVEYS Q-0041-C, Q-0044-B, Q-0045-B, 09-163-A, 11-038-C, 92-045-C, 94-127-C, 95-059-B, 95-060-B, 98-155-C, 98-213-C, H-107-B, M-079-C, S-066-B, S-156-C, S-158-C, CORNER RECORDS; G.L.O. SURVEYS

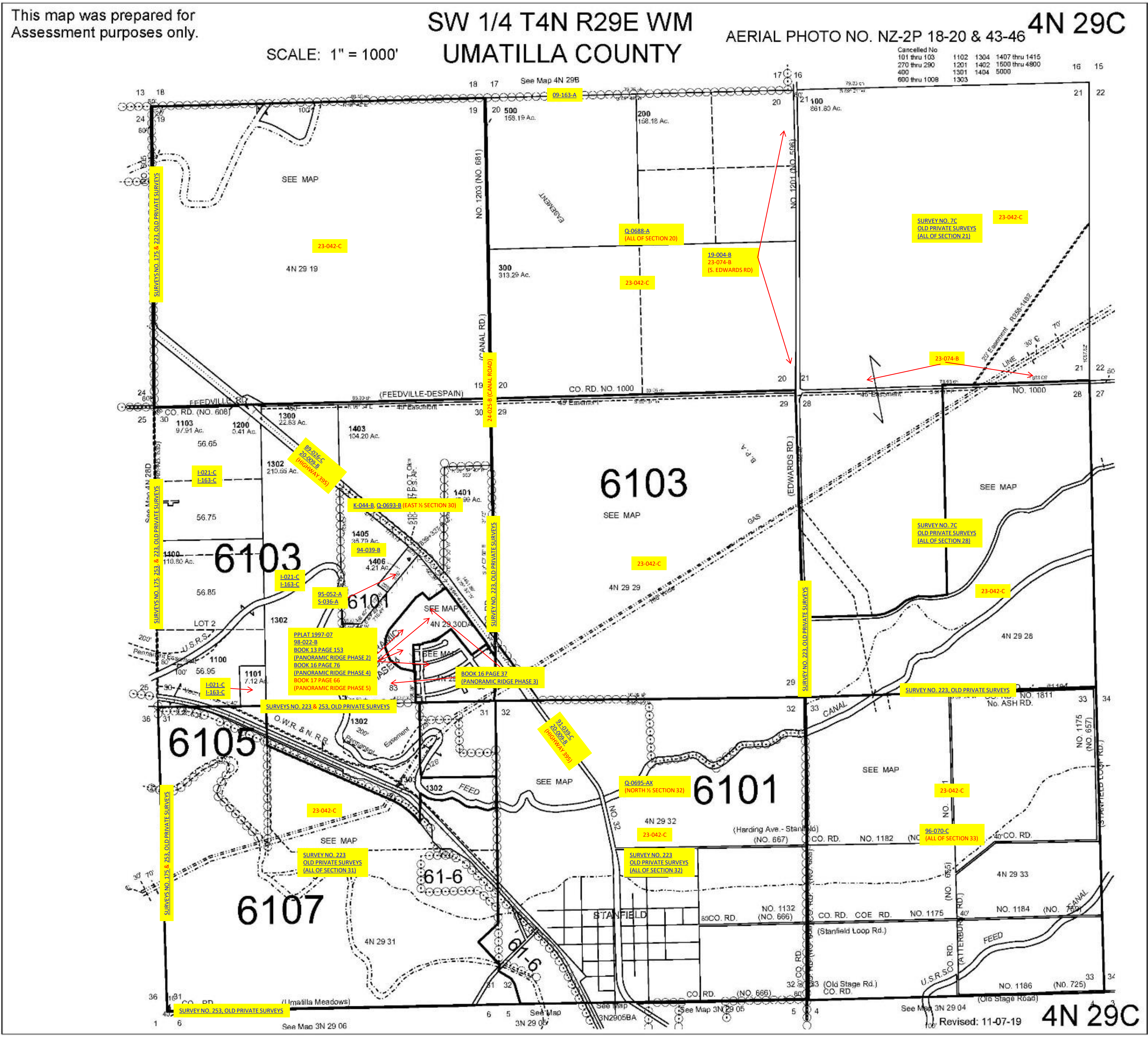
This map was prepared for Assessment purposes only.

SW 1/4 T4N R29E WM  
UMATILLA COUNTY

AERIAL PHOTO NO. NZ-2P 18-20 & 43-46 4N 29C

SCALE: 1" = 1000'

Cancelled No 101 thru 103 270 thru 290 400 600 thru 1008	1102 1201 1301 1303	1304 1402 1404 5000	1407 thru 1415 1500 thru 4800
--	------------------------------	------------------------------	----------------------------------



Revised: 11-07-19 4N 29C