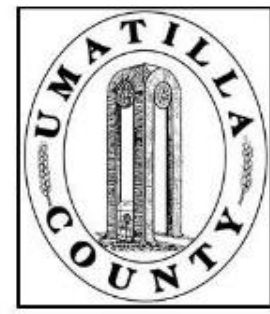


This map was prepared for Assessment & Taxation purposes only and was NOT prepared nor is it suitable for legal, engineering or surveying purposes.



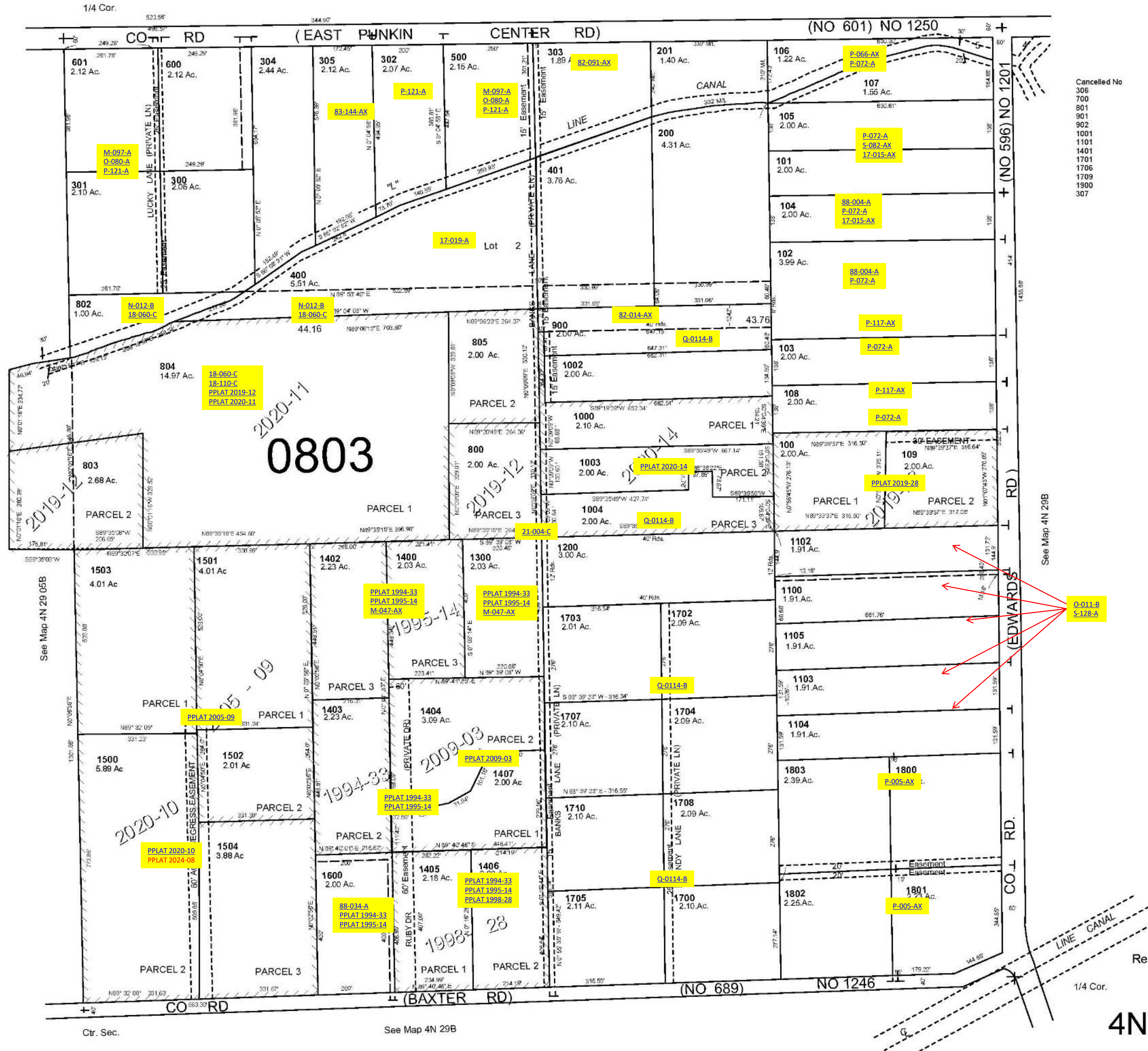
NE 1/4 SEC 5 T 4N R 29 E WM
UMATILLA COUNTY, OR

4N2905A

SCALE: 1" = 200'

Aerial Photo No. NZ-1P-125
& 126

See Map 5N 29 32



Cancelled No
306
700
801
901
902
1001
1101
1401
1706
1709
1800
307

See Map 4N 29 05B

See Map 4N 29B

Ctr. Sec.

See Map 4N 29B

Revised:06-16-2020

4N2905A