

ALSO SEE SURVEYS N-012-B, 07-074-C, 95-059-B; SURVEYS NO. 233 & 308, OLD PRIVATE SURVEYS; CORNER RECORDS; G.L.O. SURVEYS

This map was prepared for Assessment & Taxation purposes only and was NOT prepared nor is it suitable for legal, engineering or surveying purposes.

NW 1/4 SEC 05 T4N R29E WM UMATILLA COUNTY

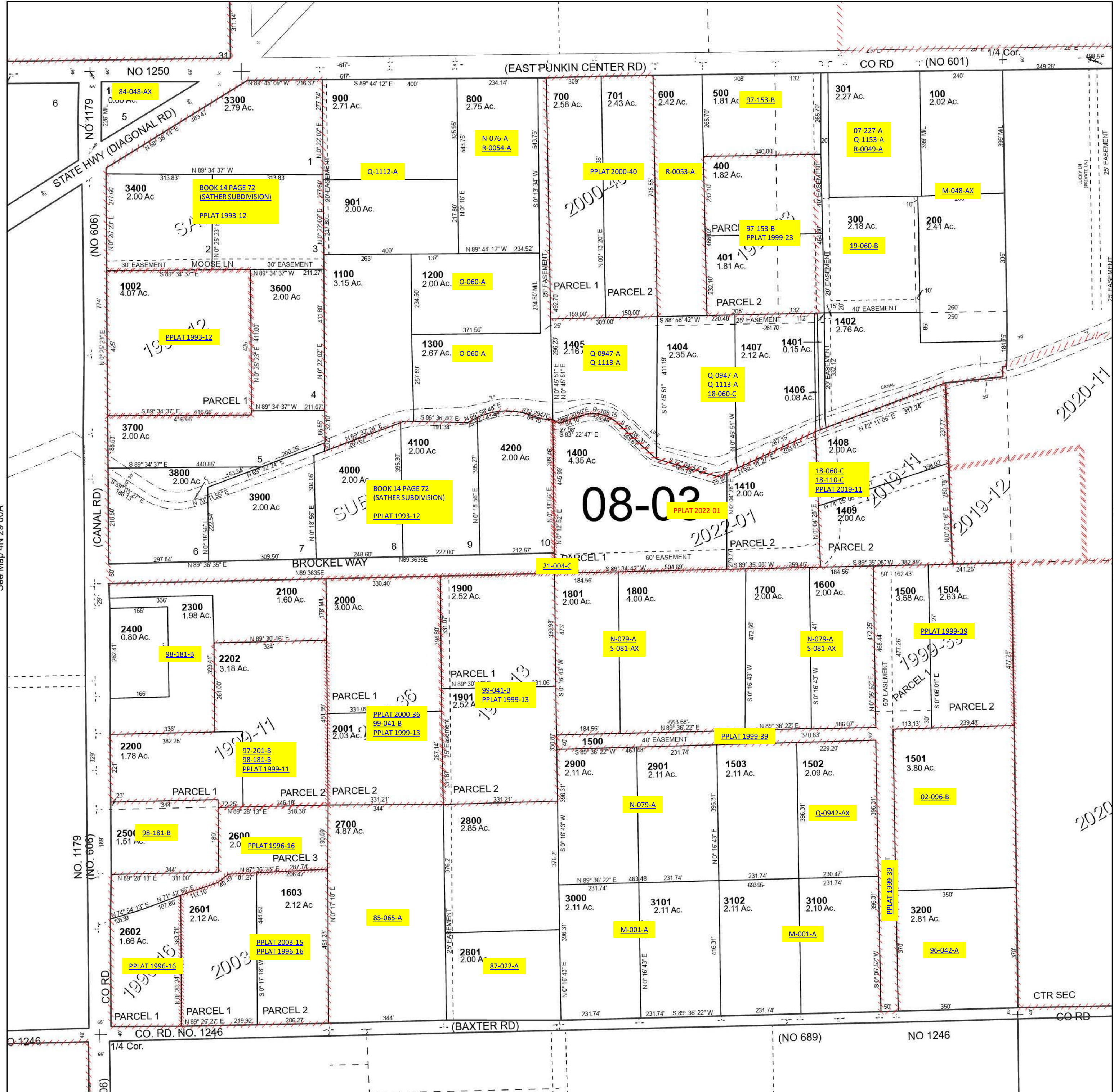
4N 29 05B

SCALE 1" = 200'

See Map 5N 29 32CC

Cancelled Tax Lots

- 201
- 1000
- 1403
- 2201



See Map 4N 29 06A

See Map 4N 29 05A

Revised 4/27/2023

See Map 4N 29 05C

4N 29 05B