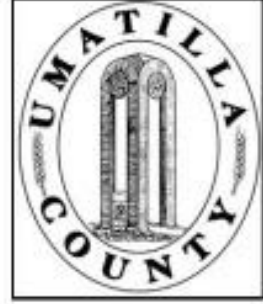


ALSO SEE SURVEYS 96-116-A, 07-074-C, 86-105-A, 95-059-B; SURVEYS NO. 233 & 308, OLD PRIVATE SURVEYS; CORNER RECORDS; G.L.O. SURVEYS

This map was prepared for
Assessment purposes only.



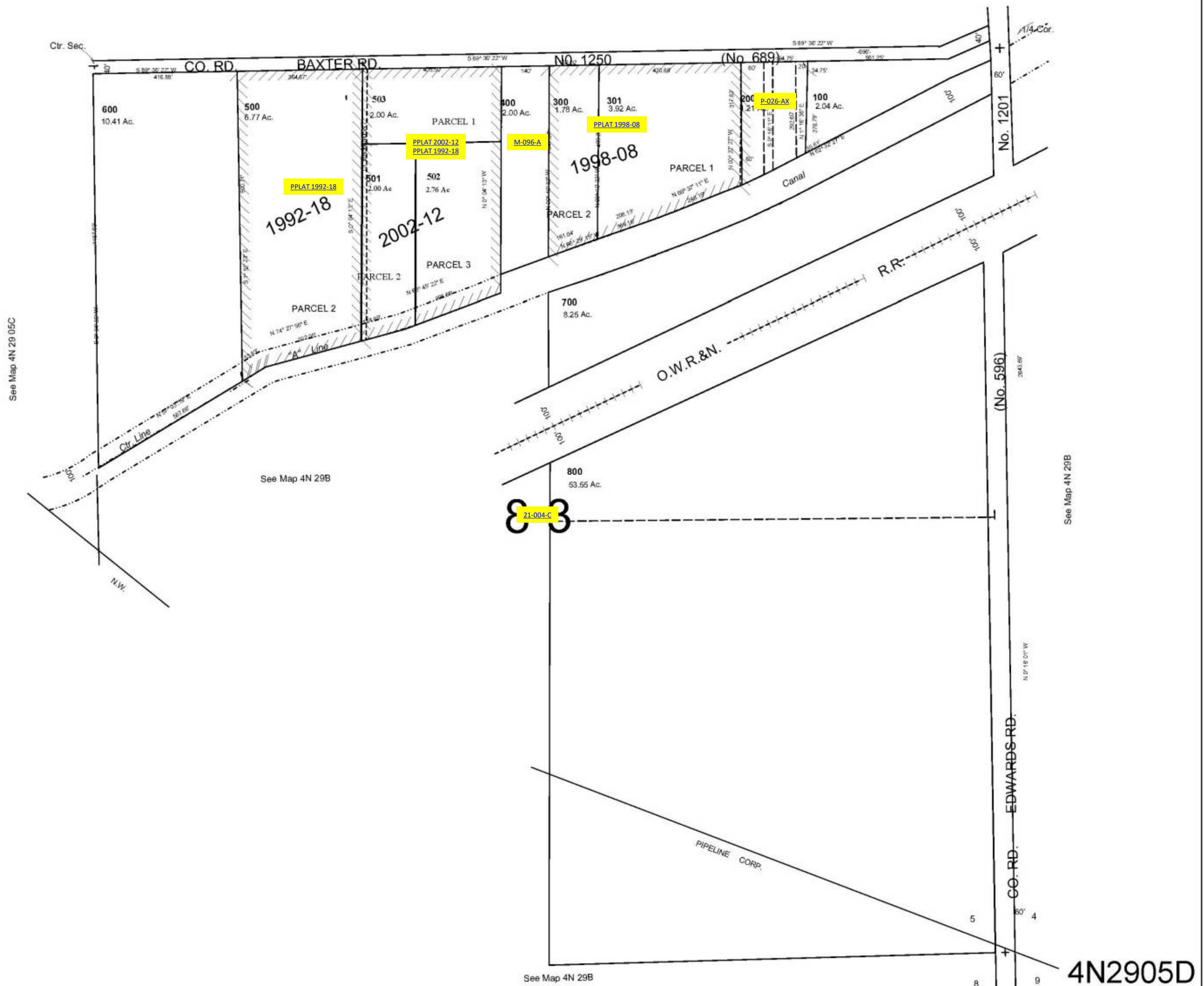
SE1/4 SEC 5 T 4N R 29 E WM
UMATILLA COUNTY, OR

4N2905D

1/30/06

SCALE: 1" = 200'

See Map 4N 29 05A



4N2905D