

ALSO SEE SURVEYS Q-0682-A, S-156-C, 07-074-C, 95-059-B; SURVEYS NO. 233 & 304, OLD PRIVATE SURVEYS; CORNER RECORDS; G.L.O. SURVEYS

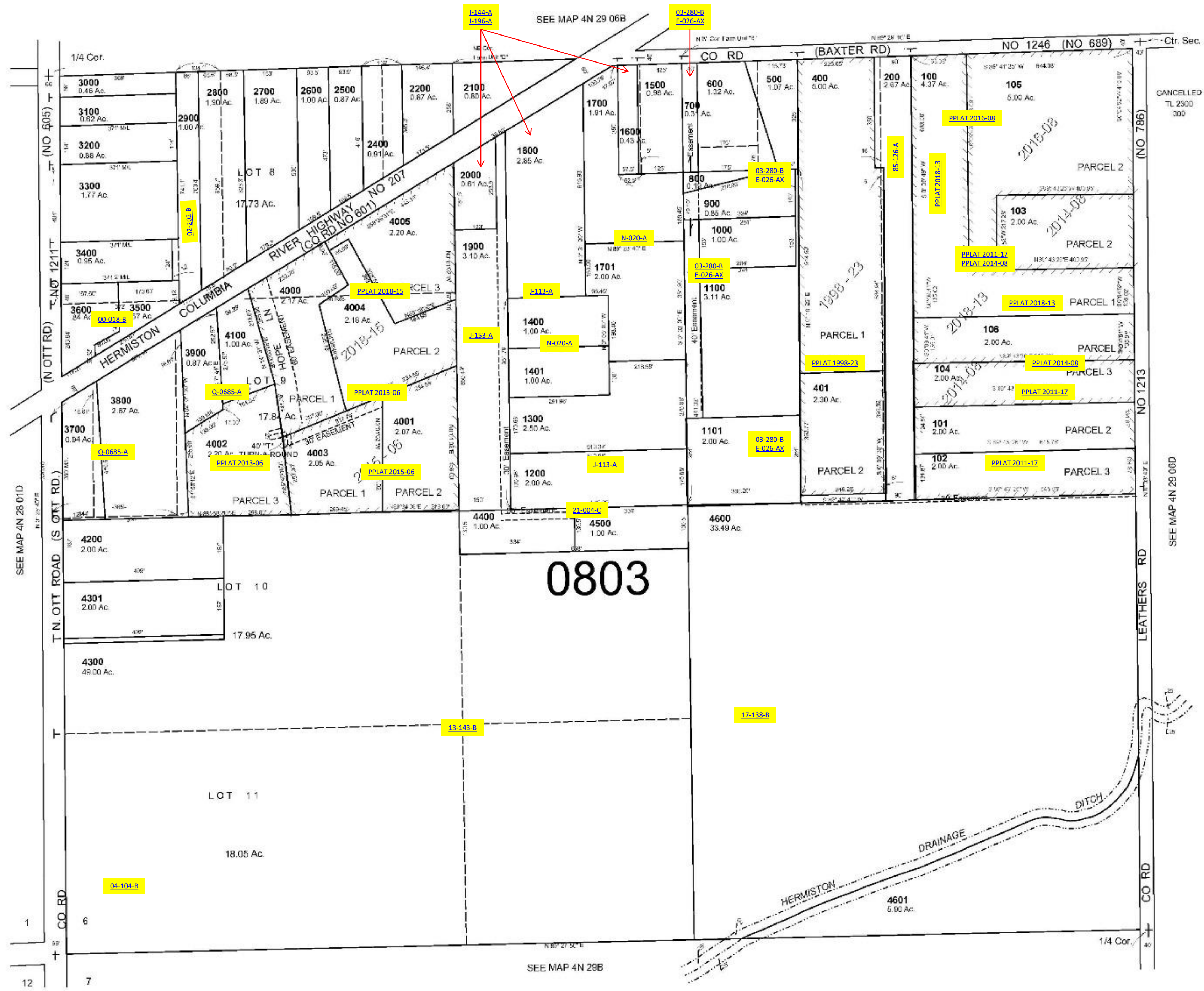
This map was prepared for Assessment & Taxation purposes only and was NOT prepared nor is it suitable for legal, engineering or surveying purposes.

SW1/4 SEC 6 T4N R29E WM UMATILLA COUNTY

SCALE 1"=200'

4N 29 06C

AERIAL PHOTO NO, 1P 124 & 125



Revised: 11-14-18

4N 29 06C