

ALSO SEE SURVEY Q-0045-B

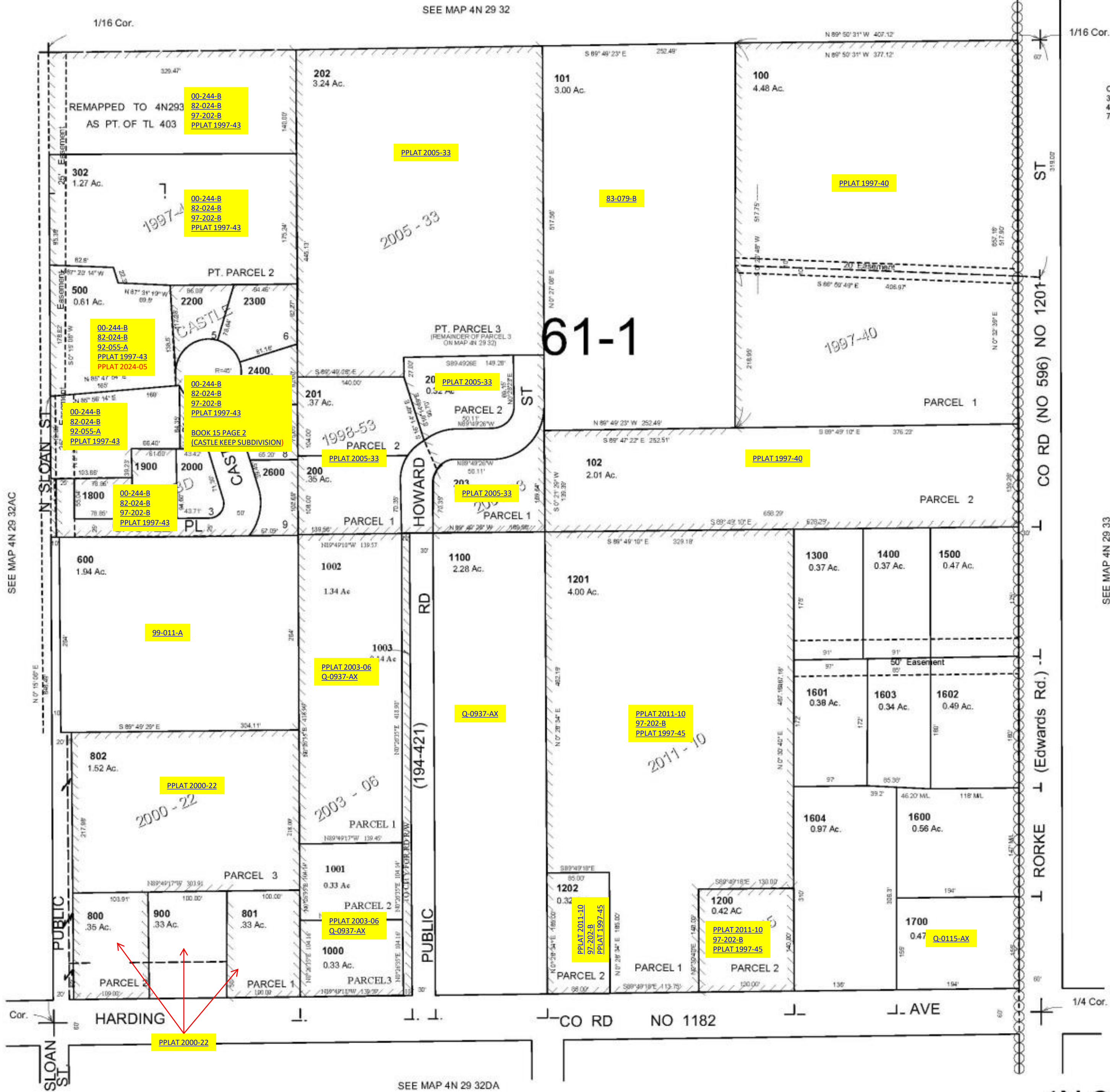
This map was prepared for Assessment & Taxation purposes only and was NOT prepared nor is it suitable for legal, engineering or surveying purposes.



SE1/4 NE1/4 SEC 32 T4 N R29E WM UMATILLA COUNTY

4N 29 32AD
AERIAL PHOTO NO 2P 45 & 46

SCALE: 1" = 100'



Cancelled No
300
400
700

SEE MAP 4N 29 33

Revised: 4/19/11

4N 29 32AD