

ALSO SEE SURVEYS 06-263-C, 07-216-B, 15-052-C; CORNER RECORDS; G.L.O. SURVEYS

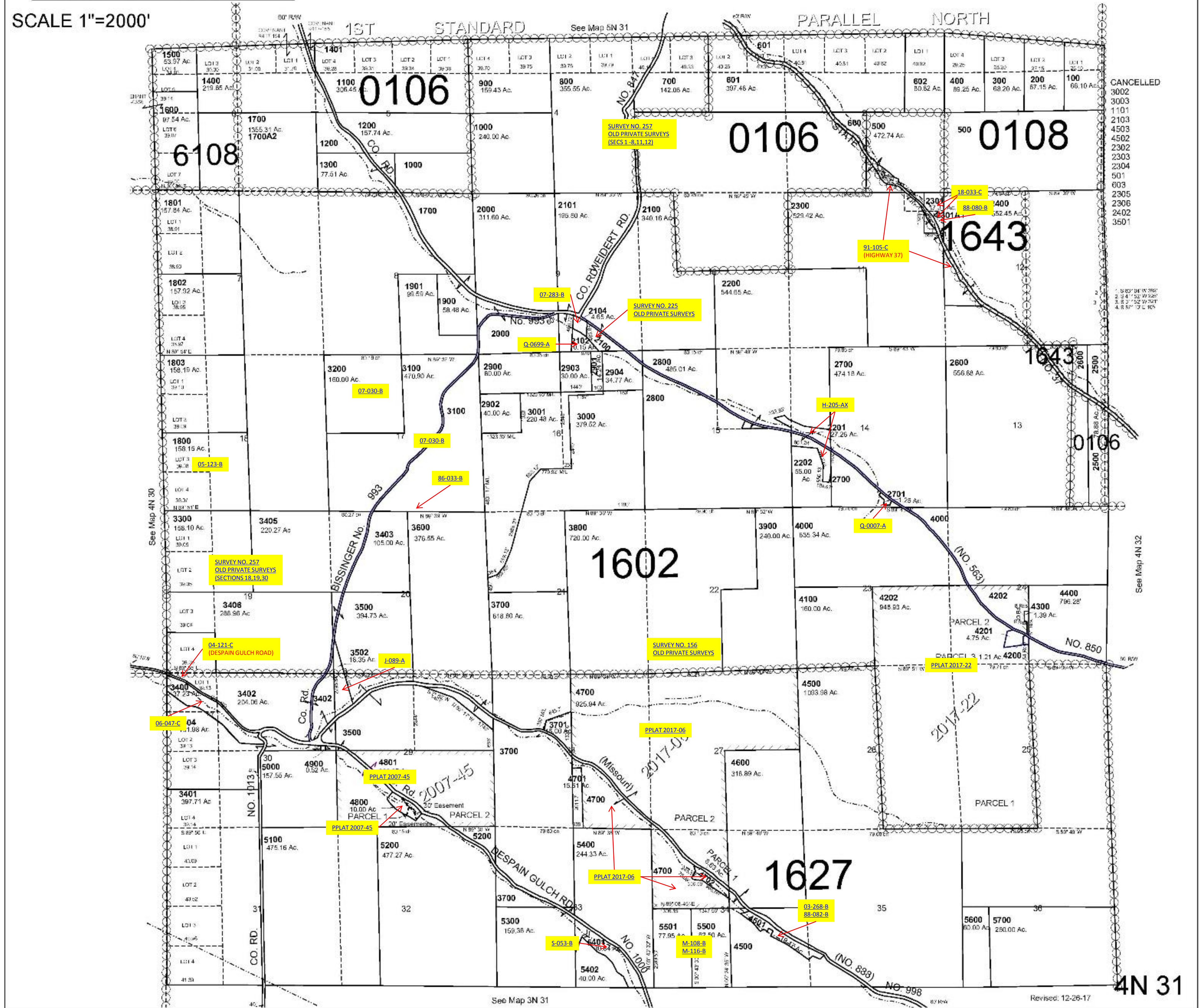
This map was prepared for Assessment & Taxation purposes only and was NOT prepared nor is it suitable for legal, engineering or surveying purposes.

T4N R31E WM UMATILLA COUNTY

4N 31

AERIAL PHOTO NO. NZ 1P-136-142, 2P 3-9 & 56-62

SCALE 1"=2000'



4N 31

Revised: 12-26-17