

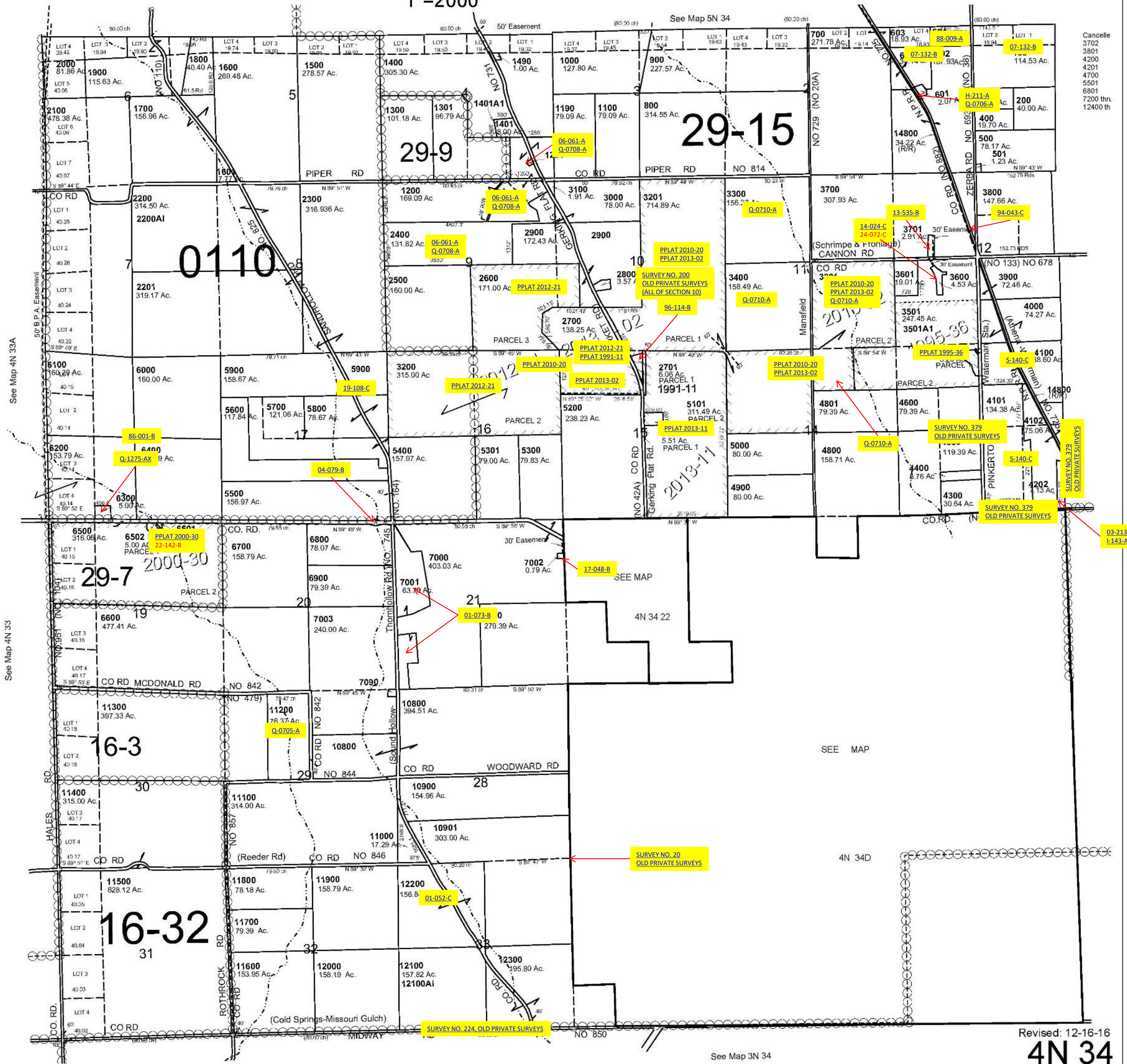
This map was prepared for Assessment & Taxation purposes only and was NOT prepared nor is it suitable for legal, engineering or surveying purposes.

T4N R34E WM UMATILLA COUNTY

4N 34

AERIAL PHOTO NO. NZ-5P 54-60, 100-105, 132-136

1"=2000'



Revised: 12-16-16

4N 34