

ALSO SEE CORNER RECORDS; G.L.O. SURVEYS

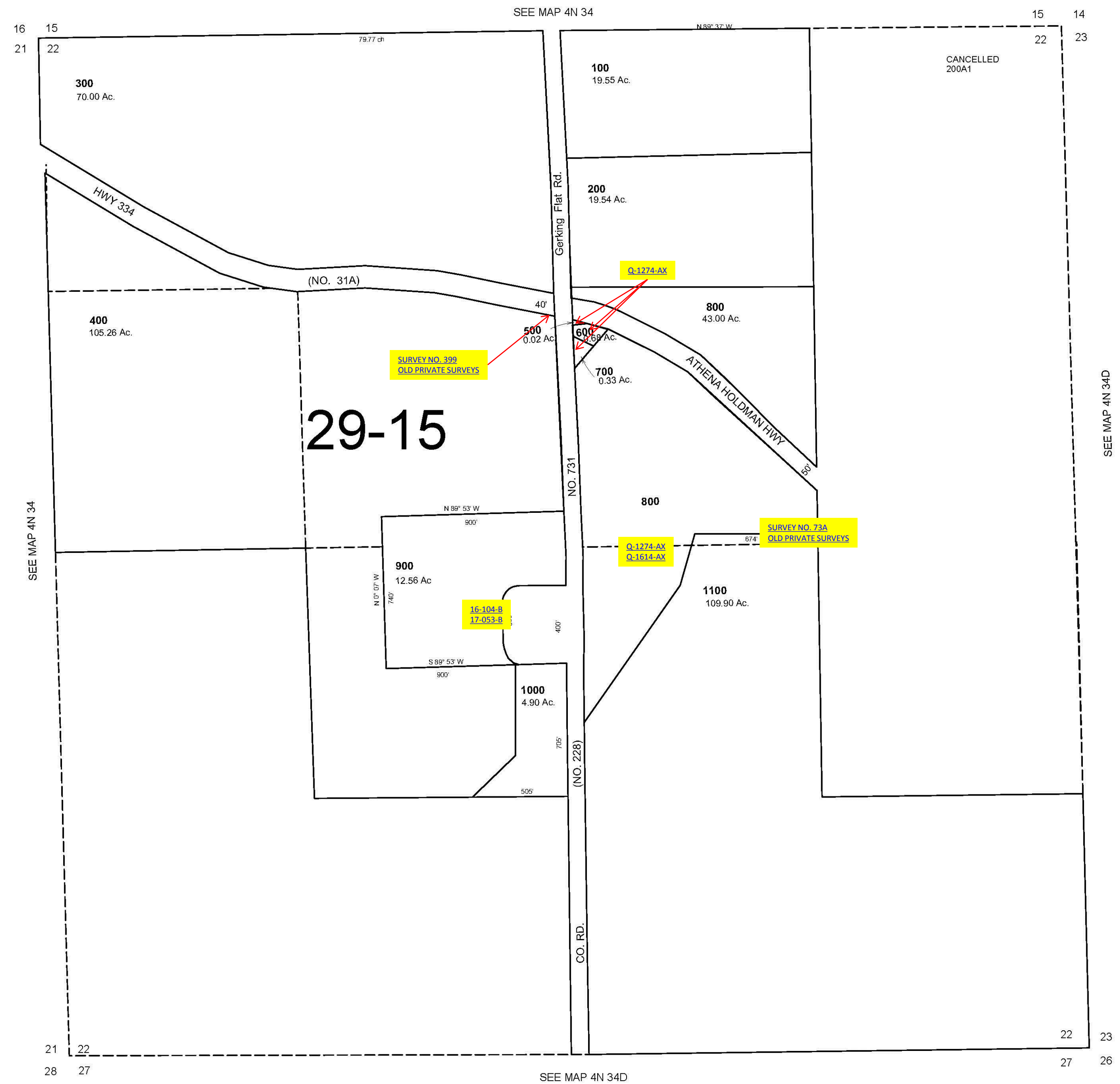
This map was prepared for Assessment & Taxation purposes only and was NOT prepared nor is it suitable legal, engineering or surveying purposes.

SEC. 22 T4N R34E WM UMATILLA COUNTY

SCALE 1"=400'

4N 34 22

AERIAL PHOTO NO. NZ-5P 54-60, 100-105,132-136



Revised: 2/01/12

4N 34 22