

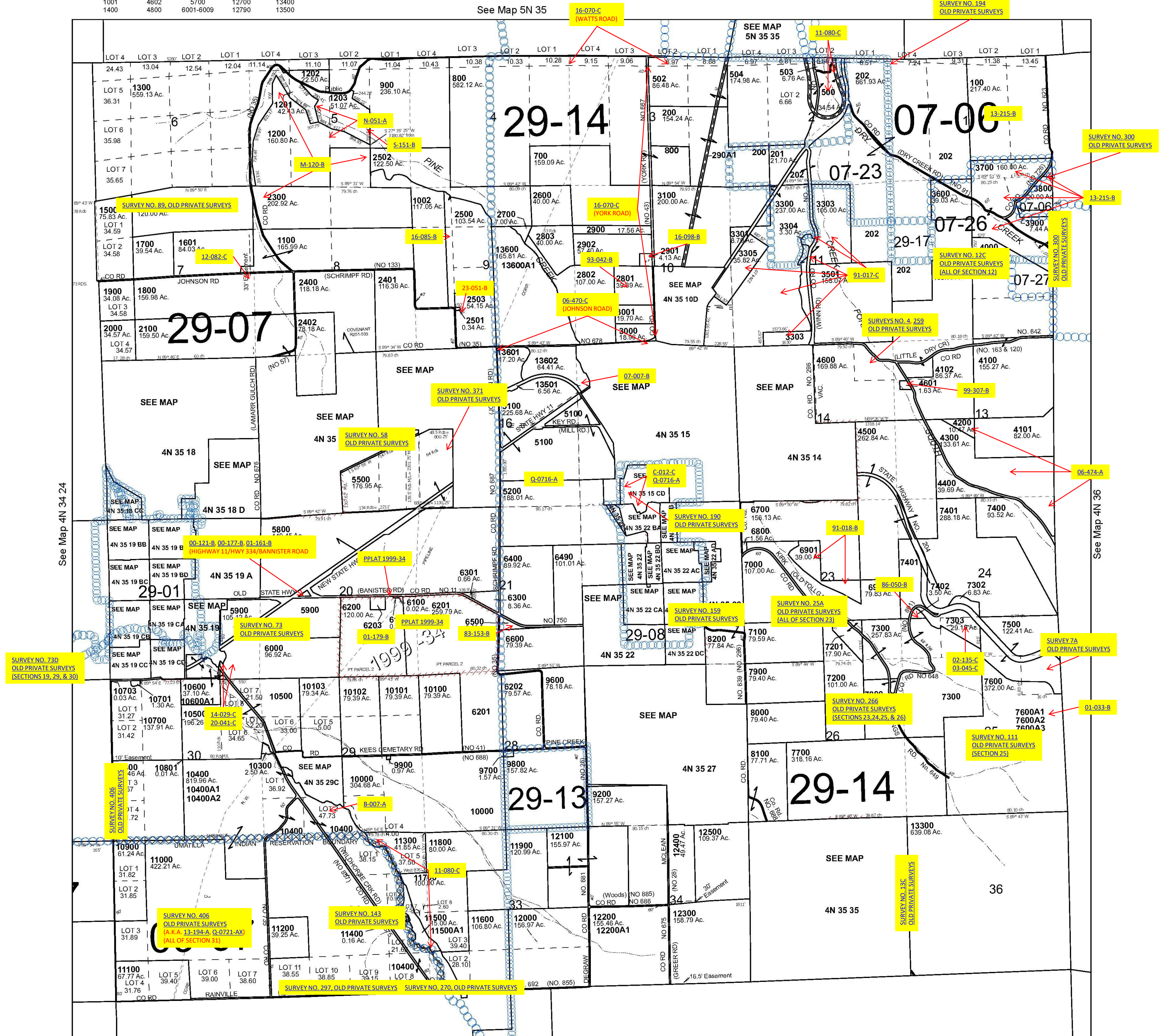
ALSO SEE SURVEYS 05-083-B, 07-066-B, 07-136-A, 13-194-A, 02-012-C, 03-023-C, 11-143-A, 83-076-C, 83-156-C, 97-141-C; SURVEY NO. 25B, OLD PRIVATE SURVEYS; CORNER RECORDS; G.L.O. SURVEYS; REDFIELD SURVEYS (SECTIONS 31-33)

This map was prepared for Assessment & Taxation purposes only and was NOT prepared nor is it suitable for legal, engineering or surveying purposes.

# T4N R35E WM UMATILLA COUNTY SCALE 1" = 2,000'

4N 35

Cancelled Tax Lots				
300	2200	4901	7301	12800
400	2403	5101	7304	12801
401	2403	5201-5208	7403	12900-12904
501	2405-2407	5300	8700	12990
504-506	2900	5400	10200-10202	13000
600	3101-3104	5500	10702	13100
901	3200-3202	5600	12600	13101
1000	3400	5601	12601	13200
1001	4602	5700	12700	13400
1400	4800	6001-6009	12790	13500



Revised 10/9/2024

See Map 3N 35

4N 35