

ALSO SEE SURVEY 11-065-C, 11-181-B

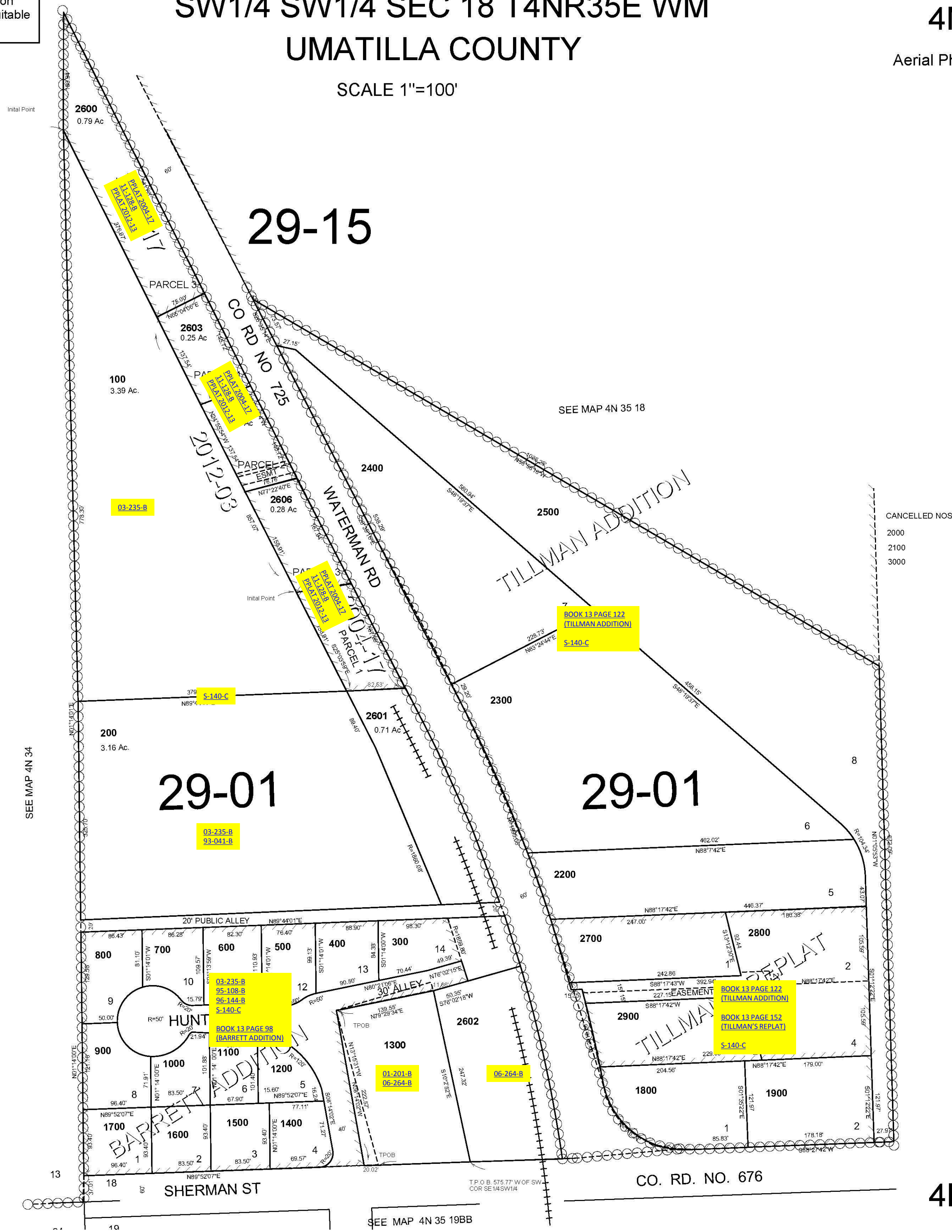
This map was prepared for Assessment & Taxation purposes only and was NOT prepared nor is it suitable for legal, engineering or surveying purposes.

SW1/4 SW1/4 SEC 18 T4NR35E WM UMATILLA COUNTY

4N3518CC

Aerial Photo No. NZ-5P-100

SCALE 1"=100'



REVISED: 09-25-13

4N3518CC