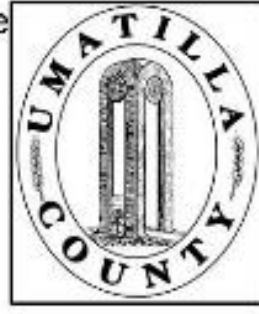


This map was prepared for Assessment & Taxation purposes only and was NOT prepared nor is it suitable for legal, engineering or surveying purposes.



NE1/4 SW1/4 SEC 19 T 4N R 35E WM

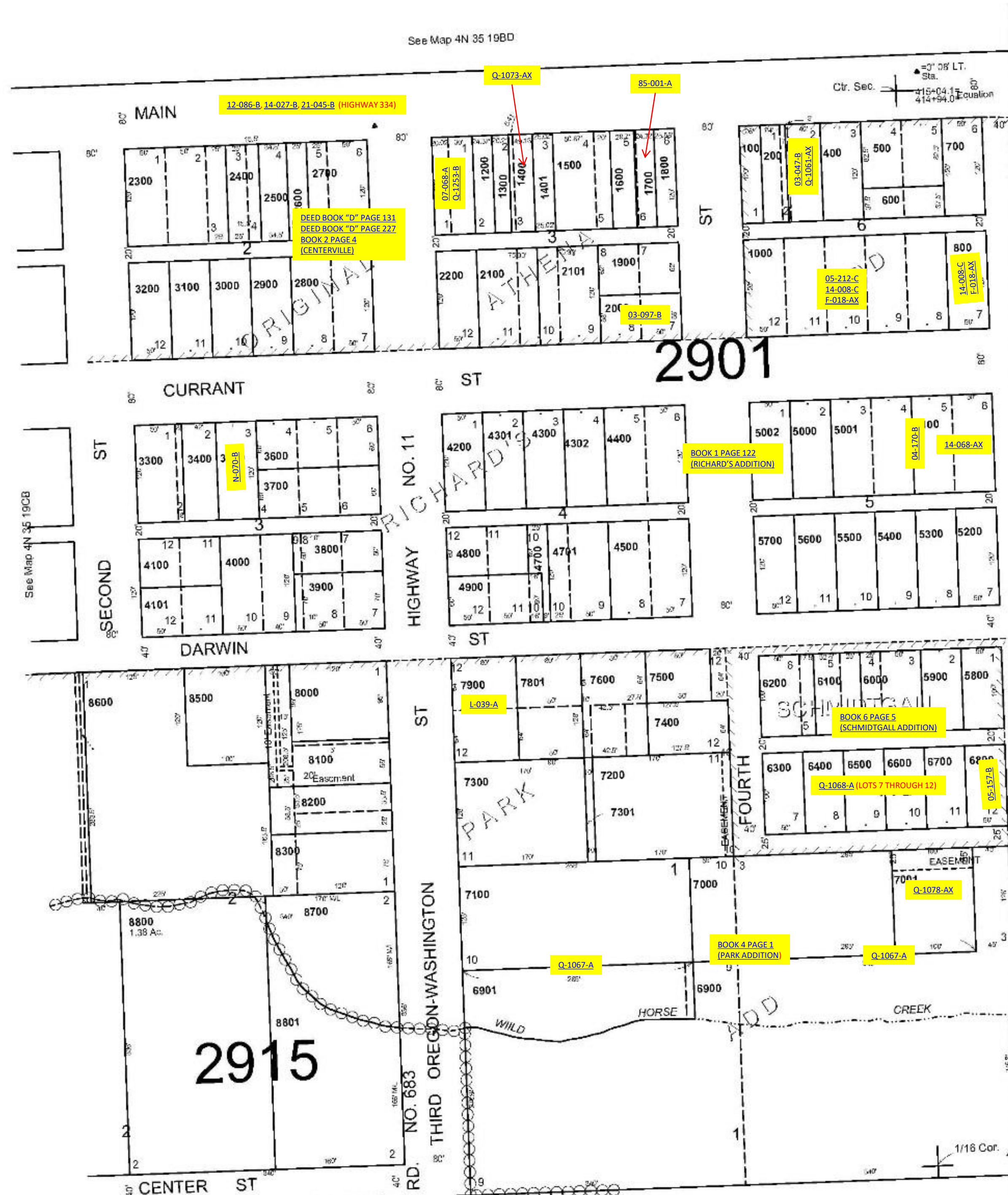
UMATILLA COUNTY

SCALE: 1" = 100'

4N3519CA

AERIAL PHOTO NO. 5P-100

1/16 Cor.



CANCELLED NOS
7701
4800
7700
8401
8400
7800

See Map 4N 35 19CB

See Map 4N 35

1/16 Cor.

REVISED: 04-05-18

4N3519CA