

This map was prepared for Assessment & Taxation purposes only and was NOT prepared nor is it suitable for legal, engineering or surveying purposes.

SE1/4 SEC 26 T4N R37E WM UMATILLA COUNTY

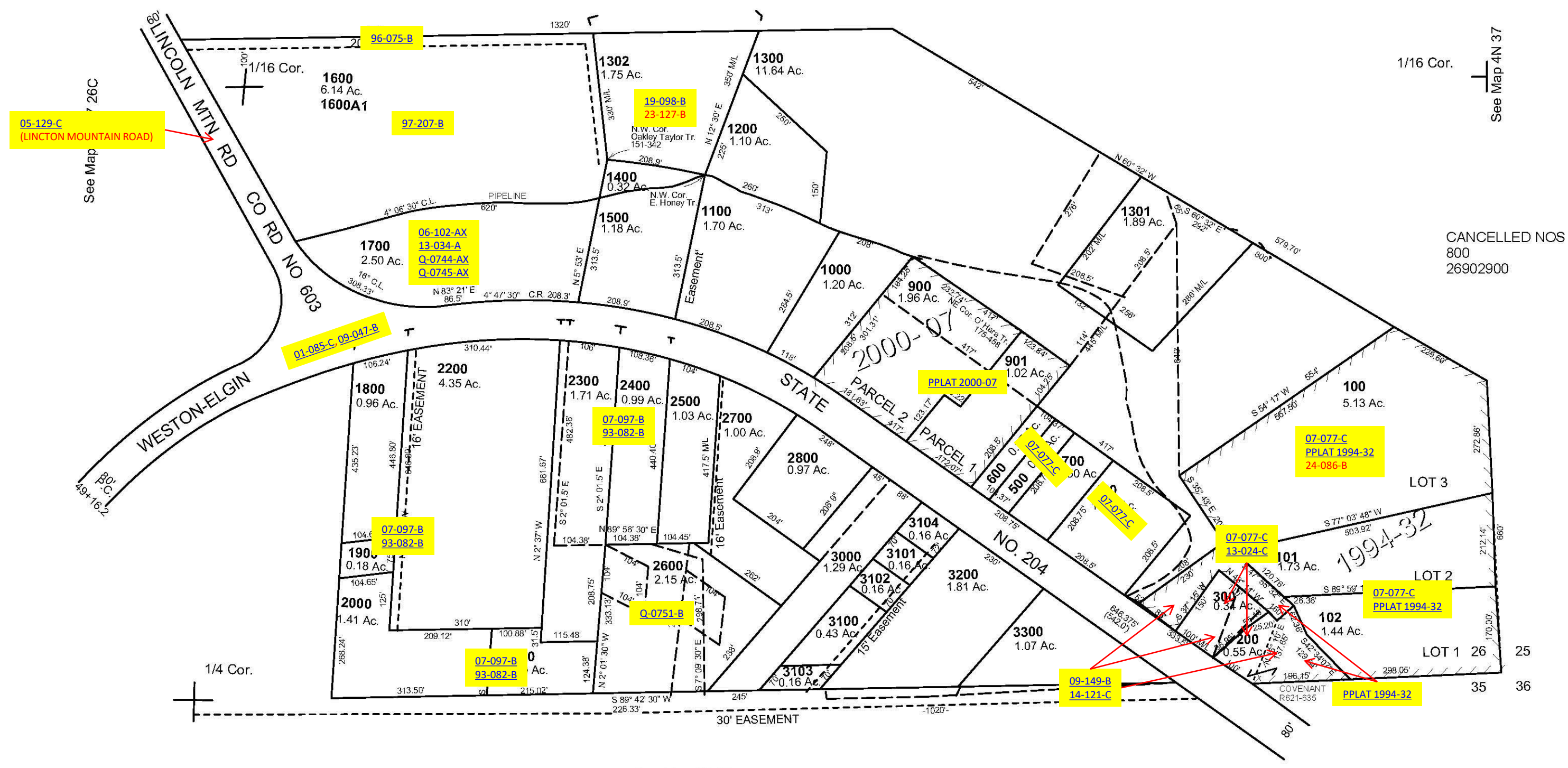
4N 37 26D

AERIAL PHOTO NO. 9P-35

1"=200'

See Map 4N 37

29-14



CANCELLED NOS
800
26902900

See Map 4N 37

REVISED: 12/12/14

4N 37 26D