

ALSO SEE SURVEYS 06-100-AX, 91-075-C, 93-064-C, 99-047-B, F-025-AX, N-065-B; CORNER RECORDS; G.L.O. SURVEYS

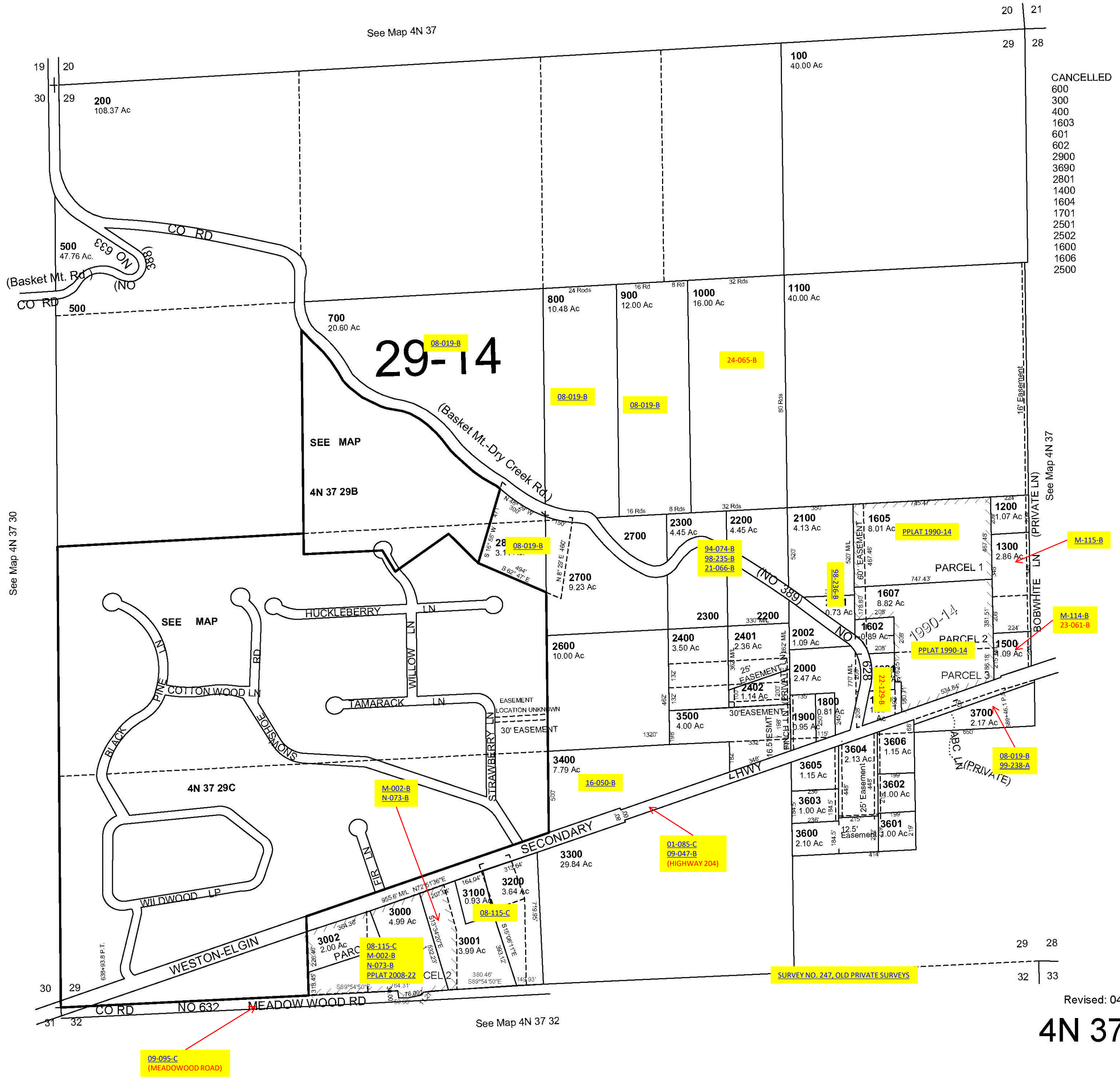
This map was prepared for Assessment & Taxation purposes only and was NOT prepared nor is it suitable for legal, engineering or surveying purposes.

SEC 29 T4N R37E WM
UMATILLA COUNTY

4N 37 29

Aerial Photo No. SP-39

SCALE 1" = 400'



CANCELLED
600
300
400
1603
601
602
2900
3690
2801
1400
1604
1701
2501
2502
1600
1606
2500

Revised: 04-16-13

4N 37 29