

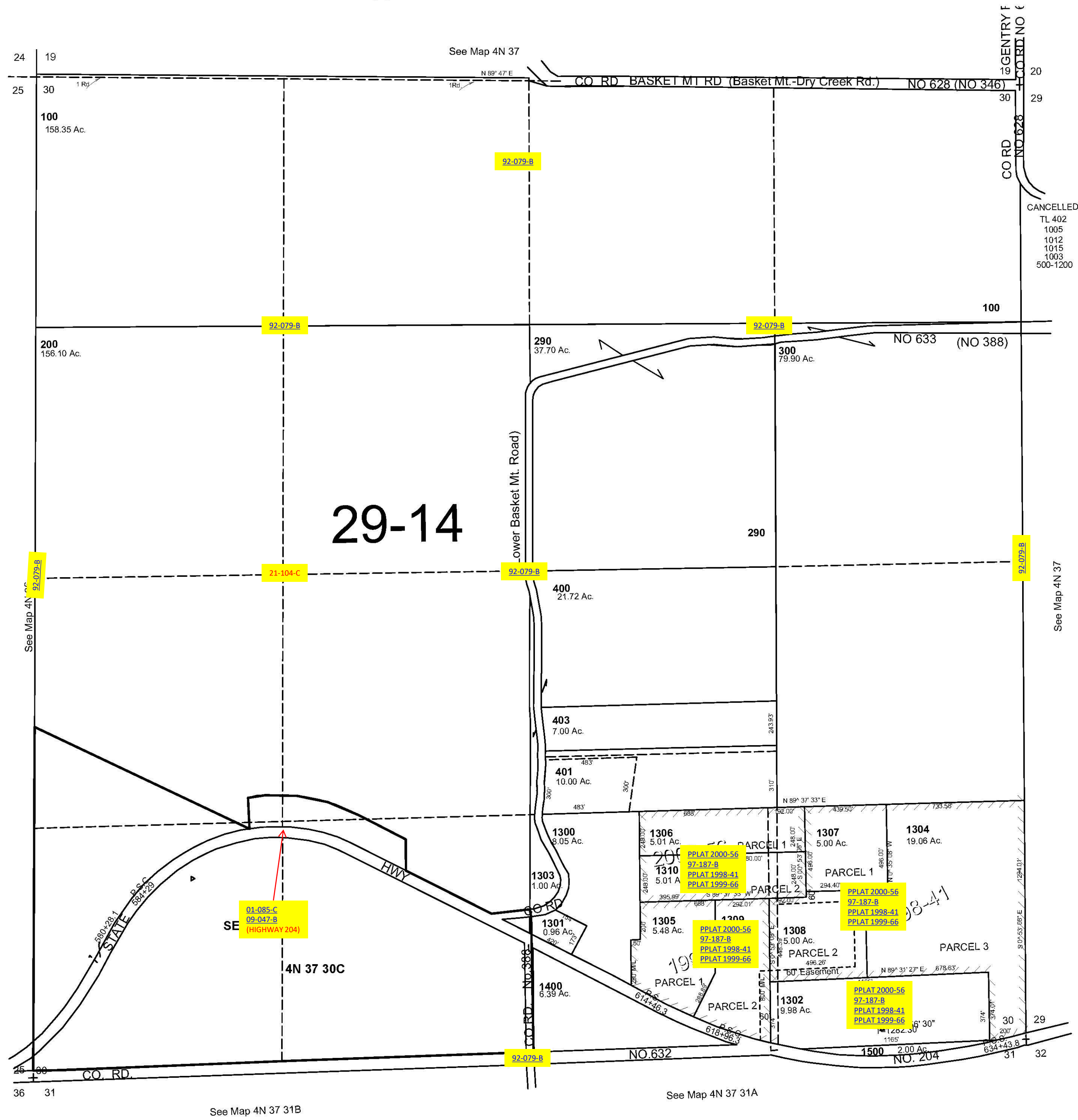
ALSO SEE SURVEYS 91-075-C, 93-064-C; CORNER RECORDS; G.L.O. SURVEYS

This map was prepared for Assessment & Taxation purposes only and was NOT prepared nor is it suitable for legal, engineering or surveying purposes.

SEC 30 T4N R37E WM UMATILLA COUNTY

1"=400'

4N 37 30
AERIAL PHOTO NO. 9P-39



Revised: 9/08/09

4N 37 30