

ALSO SEE SURVEYS 06-142-AX; CORNER RECORDS; G.L.O. SURVEYS

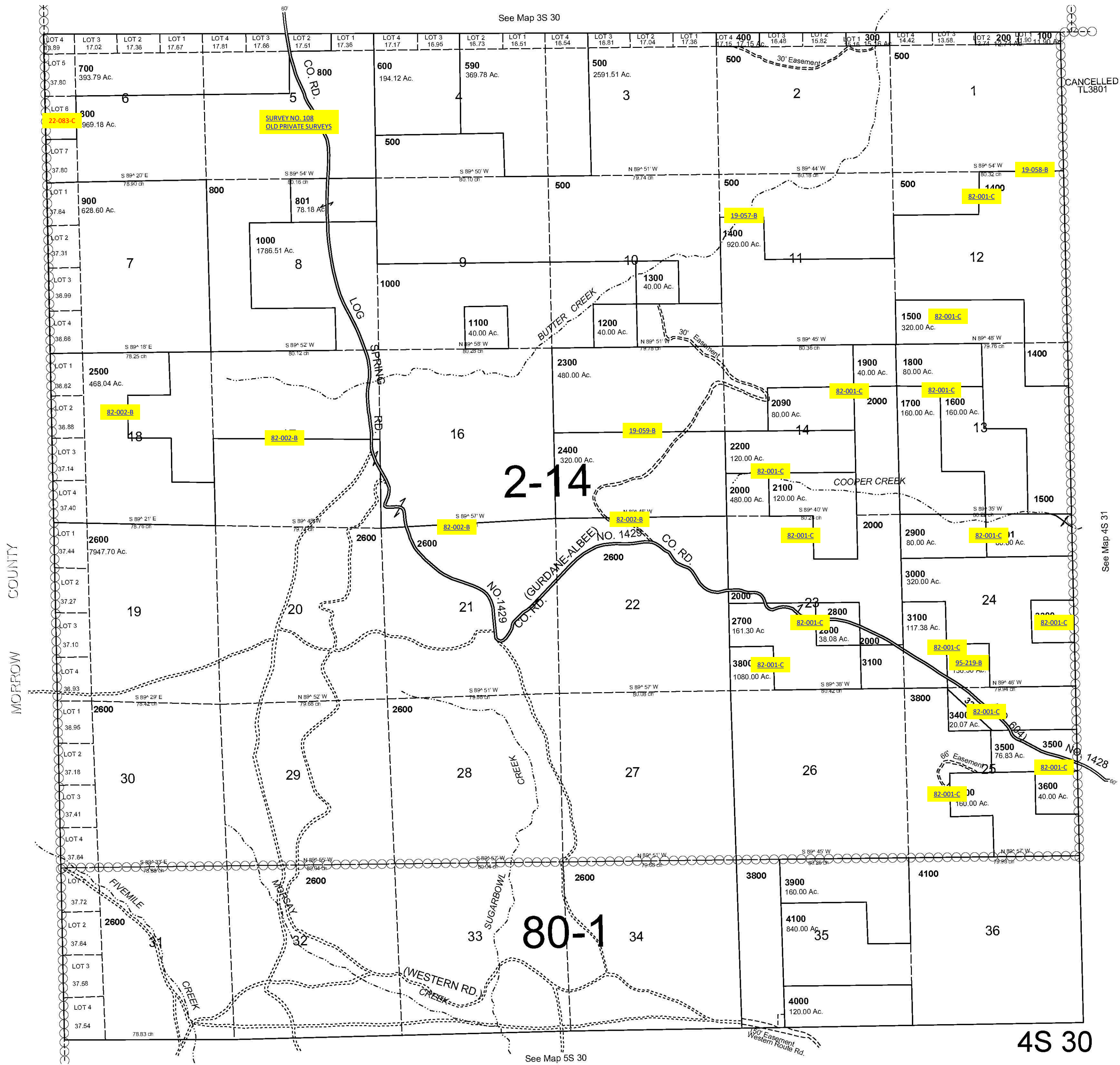
This map was prepared for assessment purposes

NW1/4 SW1/4 T NR E WM UMATILLA COUNTY

1/10/07

4S 30
AERIAL PHOTO NO. 10P 33-38

1" = 2000'



CANCELLED TL3801

See Map 3S 30

See Map 4S 31

See Map 5S 30

4S 30