

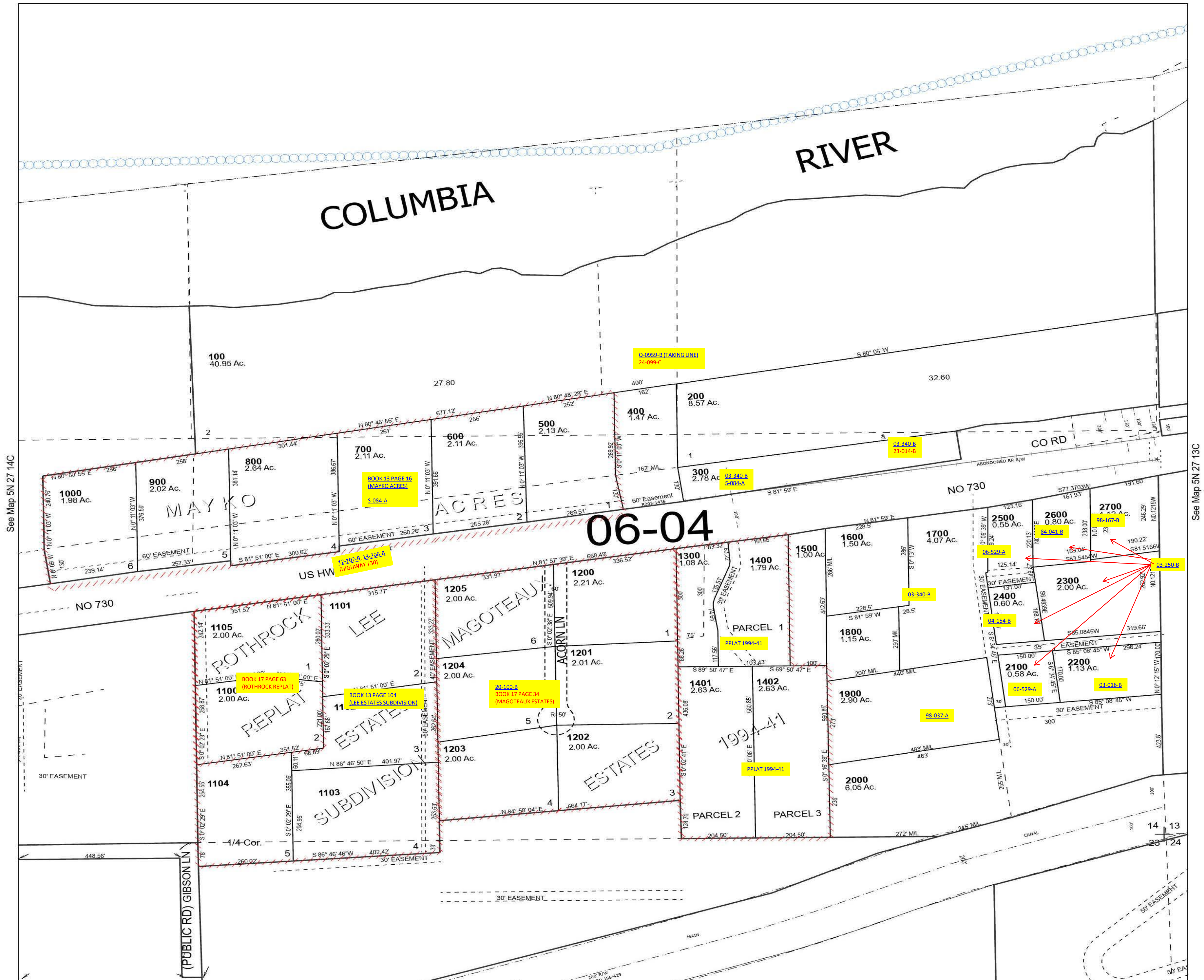
This map was prepared for Assessment & Taxation purposes only and was NOT prepared nor is it suitable for legal, engineering or surveying purposes.

Cancelled Tax Lots  
1403

# SE 1/4 SEC 14 T5N R27E WM UMATILLA COUNTY

## 5N 27 14D

SCALE 1" = 200'



See Map 5N 27 14C

See Map 5N 27 13C

## 5N 27 14D