

ALSO SEE SURVEYS 06-461-B, I-016-C, D-043-AX, J-006-A, J-102-A; CORNER RECORDS; G.L.O. SURVEYS

This map was prepared for Assessment & Taxation purposes only and was NOT prepared nor is it suitable for legal, engineering or surveying purposes.

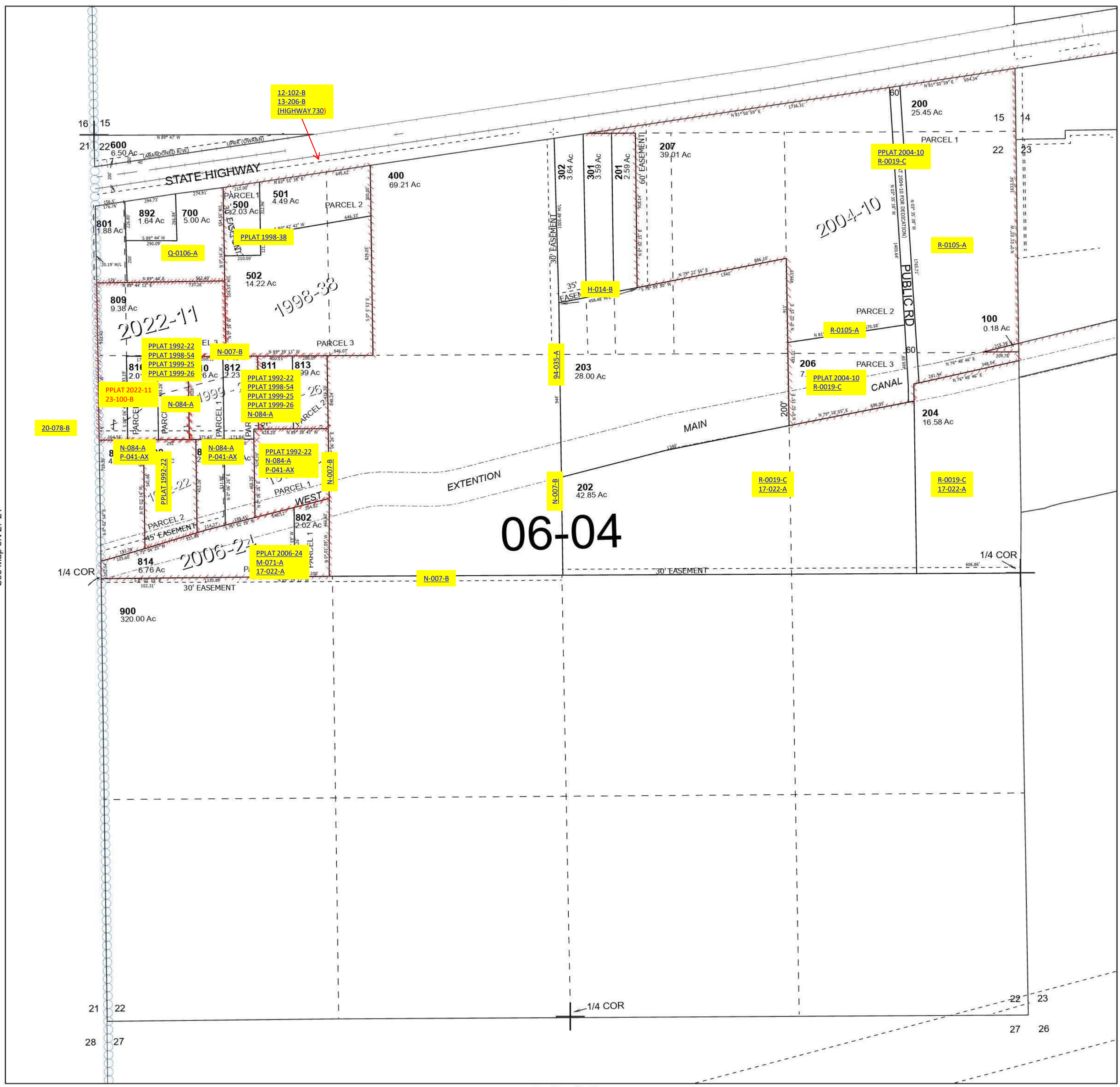
# SEC 22 T5N R27E WM UMATILLA COUNTY

## 5N 27 22

SCALE 1" =400'

See Map 5N 27

- Cancelled Tax Lots
- 205
  - 300
  - 303
  - 304
  - 803
  - 807
  - 890
  - 891



Revised 7/3/2023

See Map 5N 27

## 5N 27 22